

**United States Department of the Interior
National Park Service**

**National Register of Historic Places
Continuation Sheet**

Geddes Historic District (Additional
Documentation 2023)

Name of Property
Charles Mix, SD

County and State
73001737

NR Reference Number

State Certification

As the designated authority under the National Historic Preservation Act, as amended,
I hereby certify that this additional documentation ___ additional documentation: name
change ___ move ___ removal ___ other
meets the documentation standards for registering properties in the National Register of Historic
Places and meets the procedural and professional requirements set forth in 36 CFR Part 60.

Signature of Certifying Official/Title

Date of Action

Federal Agency Certification

As the designated authority under the National Historic Preservation Act, as amended,
I hereby certify that this ___ additional documentation ___ additional documentation: name change
___ move ___ removal ___ other
meets the documentation standards for registering properties in the National Register of Historic
Places and meets the procedural and professional requirements set forth in 36 CFR Part 60.

Signature of Certifying Official/Title

Date of Action

National Park Service Certification

I hereby certify that this property is:
___ entered in the National Register
___ determined eligible for the National Register
___ determined not eligible for the National Register
___ removed from the National Register
___ additional documentation accepted
___ other (explain:) _____

Signature of the Keeper

Date of Action

**United States Department of the Interior
National Park Service**

**National Register of Historic Places
Continuation Sheet**

Geddes Historic District (Additional
Documentation 2023)

Name of Property
Charles Mix, SD

County and State
73001737

NR Reference Number

Number of Resources within Property

(Do not include previously listed resources in the count)

Contributing
51

Noncontributing
160

buildings

sites

structures

objects

51

160

Total

Number of contributing resources previously listed in the National Register n/a

United States Department of the Interior
National Park Service

National Register of Historic Places
Continuation Sheet

Geddes Historic District (Additional
Documentation 2023)

Name of Property
Charles Mix, SD

County and State
73001737

NR Reference Number

The Geddes Historic District was listed in the National Register in 1973 under Criteria A and C for Architecture and Transportation. The period of significance is 1900-1920.¹ The significance at the time of nomination is, perhaps, best summarized by the following passage excerpted from the 1973 nomination's statement of significance:

“Geddes is a physical manifestation of a late American frontier town at the turn of the century. The town grew as a result of increased settlement within the area sparked by the opening of the Yankton Reservation and the arrival of the Chicago, Milwaukee, St. Paul and Pacific. Its tree-lined streets, large Victorian homes, and false-front stores are reminiscent of a thousand cities who grew up at a railroad terminus, enjoyed a few years of exuberant optimism and growth, and spent the rest of its years in painful decline and obscurity. National and regional trends of classic impact contributed to a unique preservation of this prairie town. The decline of the railroad with the advent of other transportation means, the agricultural depression following World War I, the loss of the political battle for designation as County Seat, and the Pick-Sloan River Project (which claimed the area's best farmlands) all contributed to the stagnation of Geddes' growth. As a result of such difficulties, Geddes atrophied. For years it has been a living museum in decline – not a reproduction, but an actual town of the 1900-1920 era which survived to the 1970s. Little in the town's physical appearance has changed.”

In the last fifty years, significant change has occurred within Geddes. The closing of Main Street businesses, which occupied small wooden structures as well as larger brick buildings, has led to the deterioration and subsequent demolition of several structures. A church, dormitory, and school building have also been razed over the years, along with several large, styled homes. The application of replacement materials across all building stock is common. Vinyl siding, seam metal roofs, and a variety of new window treatments are widespread. Infill, though limited, is comprised of metal pole-type buildings and modern homes. The aesthetic charm present at the time of nomination has decreased over the years. Yet, a sampling of styled homes and commercial buildings with integrity remain.

The purpose of this 2023 additional documentation is to provide a snapshot of the district at this moment in time that will allow preservation and regulatory processes to function adequately. The documentation also establishes a property inventory and Contributing/Noncontributing map. The district contains 51 Contributing and 160 Noncontributing properties (53 of the Noncontributing are secondary structures). A photo comparison of extant and lost properties has also been included following the inventory. This includes contemporary photos as well as those from the 1970s-1990s. A selection of 2023 photos has also been included in the photographs' section.

The boundary in the 1973 nomination was clearly delineated on an aerial map. This additional documentation does not alter the original boundary. No UTM points were included in the 1973 nomination; this additional documentation establishes UTM points based on the 1973 aerial map.

¹ The opening paragraph of the 1973 nominations states “1900-1920.” Later, “1901-1920” is also used.

United States Department of the Interior
National Park Service

National Register of Historic Places
Continuation Sheet

Geddes Historic District (Additional
Documentation 2023)

Name of Property
Charles Mix, SD

County and State
73001737

NR Reference Number

Property Inventory

Address	Date	C/NC	Description
101 Dakota	modern	NC	Prefab home
105 Dakota	modern	NC	Side gabled with gabled garage
203 Dakota	modern	NC, NC, NC	Gabled/side gabled, 2 garages
204 Dakota	modern	NC	Side gabled/gabled,
210 Dakota	modern	NC	Prefab home with attached garage
211 Dakota	c.1905	NC, NC, NC	Cube w/gables, additions, 2 garages
303 Fifth	modern	NC	Newer church
309 Fifth	modern	NC	House
404 First	1997	NC, NC	Ranch
406 First	2003	NC, NC	Prefab
510 First	1905	NC, NC	Hip roof with dormers, façade addition
302 Fourth	2020	NC, NC	Trailer house and garage
303 Fourth	1903	NC	2-story, large addition and new windows
305 Fourth	1915	NC	Cube, façade gabled addition
407 Fourth	modern	NC, NC	Lodge facility
501 Fourth	1902	C, NC	Cube form with dormers
502 Fourth	1925	NC	Church
510 Fourth	1900	NC	Front gabled, additions, new siding/windows
511 Fourth	1955	NC	Side gabled house
512 Fourth	1950	NC	Ranch
604 Fourth	1910	NC	Old depot building, altered
100 Iowa	2023	NC	Metal building
103 Iowa	1903	C	Cube, enclosed porch
111 Iowa	1900	C	Cube with wing
200 Iowa	1910	NC	Tiny side gabled, new siding/windows
203 Iowa	1903	C	Front gabled

United States Department of the Interior
National Park Service

National Register of Historic Places
Continuation Sheet

Geddes Historic District (Additional
Documentation 2023)

Name of Property
Charles Mix, SD

County and State
73001737

NR Reference Number

207 Iowa	1890	NC	Front gabled, additions, new siding/windows
208 Iowa	2004	NC	Gambrel roof
211 Iowa	1905	C	Craftsman
307 Iowa	1967	c.1965	Trailer house
400 Iowa	c.1950	NC	Brick city building, shed roof
406 Iowa	2023	NC	Trailer house
410 Iowa	1903	C, NC, NC	Cube
411 Iowa	1905	NC	Cube with façade addition
501 Iowa		NC, NC	Altered cube form
505 Iowa		NC, NC	2-story, new siding, windows
509 Iowa		NC	Front gabled, altered
511 Iowa		NC, NC	Cube, new siding, windows, metal roof
117 Main	c.1950	NC, NC	Metal covered false front + new metal pole bldg
118 Main	c.1950	NC	Quonset
201 Main	1905	C	2-story commercial
202 Main	modern	NC, NC, NC	one-story, side gabled
215 Main	modern	NC, NC	Two metal pole buildings
218 Main	1902	C	Brick bank
220 Main	post 1924	NC	One-story commercial rebuilt after 1924 fire
222 Main	post- 1924	NC	Brick gas station built after 1924 fire
300 Main	1906	C	2-story brick
304 Main	modern	NC	Metal pole building
308 Main	1910	C	One-story commercial
311 Main	1925	NC	One-story brick
312 Main	1989	NC	Post office
316 Main	c.1920	NC	One-story commercial, altered
317 Main	1915/22	NC	one-story brick, infilled storefronts
322 Main	c.1970	NC	Metal clad building

United States Department of the Interior
National Park Service

National Register of Historic Places
Continuation Sheet

Geddes Historic District (Additional
Documentation 2023)

Name of Property
Charles Mix, SD

County and State
73001737

NR Reference Number

323 Main	1922	NC	2-story commercial
403 Main	modern	NC	Metal storage building
408 Main	modern	NC	Metal pole building
409 Main	c.1905	C	Cube form (old library)
420 Main	modern	NC	Metal pole building
421 Main	1976	NC	Side gabled house
501 Main	1972	NC	House
511 Main	1955	NC	Ranch house
519 Main	1910	C, NC	Queen Anne, Fred Noll House
100 Michigan	1902	C	2-story, clipped gables, strange porch alteration
101 Michigan	1900	NC, NC	Cube with gable, altered siding/windows
102 Michigan	1901	C, NC	Cube, folk porch
104 Michigan	1901	NC	Cube with addition and alterations
107 N Michigan	1913	C, NC	2-story, clipped gables
111 Michigan	1900	C	Cube
200 Michigan	1902	C	Simple Queen Anne
204 Michigan	1900	C, C	Large Craftsman, Otto Meyhaus
210 Michigan	1900	C	2-story, turret
304 Michigan	1901	NC, NC	2-story, altered w/attached garage
305 Michigan	1900	C, C	Queen Anne
306 Michigan	modern	NC	Side gabled
307 Michigan	1900	NC	Front gable with additions, alterations
408 Michigan	2001	NC, NC	House, large garage
409 Michigan	modern	NC	School, metal pole building
410 Michigan	1977	NC	Trailer house
501 Michigan	1930	NC, NC	Bungalow form, new siding/windows, metal roof
506 Michigan	1994	NC	Trailer house
508 Michigan	1983	NC	Trailer house
510 Michigan	modern	NC, NC, NC	2 gabled bldgs, 1 gambrel roof building
101 Minnesota	modern	NC	Metal building

United States Department of the Interior
National Park Service

National Register of Historic Places
Continuation Sheet

Geddes Historic District (Additional
Documentation 2023)

Name of Property
Charles Mix, SD

County and State
73001737

NR Reference Number

105 Minnesota	1919	NC, NC	Side gabled, wraparound additions
109 Minnesota	1976	NC, NC	Trailer house and garage
205 Minnesota	1902	NC, NC, NC	Cube, modern siding, windows, façade addn.
211 Minnesota	1904	NC, C	4square, large garage and rear addition
301 Minnesota	1901	C	2 story, some replacement windows
306 Minnesota	1996	NC	Prefab
307 Minnesota	1906	NC, NC	Hip roof, porch enclosed
309 Minnesota	1901	NC, NC	Side gabled, addition, new siding/windows
401 Minnesota	1995	NC, NC	Trailer house
410 Minnesota	1908	C	Cube with additions
411 Minnesota	1917	C	2-story house
509 Minnesota	1984	NC	Prefab house
303 Missouri	modern	NC	Metal pole building
305 Missouri	modern	NC	Metal pole building
402 Missouri	1901	C	Cube form
405 Missouri	1900	NC, NC	Cube, altered
407 Missouri	1910	NC, NC	Cube, altered
410 Missouri	1900	C	Front gabled
411 Missouri	1900	C	Cube form
500 Missouri	1975	C	Side gabled house
501 Missouri	1900	NC	Cube form, altered
402 Prairie	1996	NC, NC, NC	House
404 Prairie	1920	NC	Prefab house
204 Second	1905	C	Cube, partial metal roof
304 Second	1901	C, NC	Craftsman
404 Second	1978	NC	Gabled house
410 Second	1900	NC	Gable and Wing, altered
502 Second	modern	NC	Sweeping gable
605 Second	1901	C	Stone building

United States Department of the Interior
National Park Service

National Register of Historic Places
Continuation Sheet

Geddes Historic District (Additional
Documentation 2023)

Name of Property
Charles Mix, SD

County and State
73001737

NR Reference Number

402 Sixth	1910	C, NC	T-shaped house, large garage
602 Sixth	modern	NC, NC	House
604 Sixth	modern	NC, NC	House
710 Sixth	1991	NC	Metal building
806 Sixth	2010	NC	Metal pole building
303 Third	1901	NC, NC	new siding, windows, 2 garages
401 Third	1917	NC, C	1.5-story, new siding, windows
405 Third	1900	C, C	2-story, fishscales in gable
603 Third	1900	NC	2-story, new siding, windows
604 Third	modern	NC	Front gabled, metal
101 Wisconsin	1900	NC, NC	4square, new siding, windows, M.C. Hartzler House
105 Wisconsin	1973	NC	Ranch
105 N Wisconsin	c.1910	C, C	Bungalow form, Don Johnson House
111 Wisconsin	1900	C, C	4square
205 Wisconsin	1900	NC, NC, NC	New siding, windows, Dr. J.H. Meyhaus
211 Wisconsin	1901	C, C	1.5-story, clipped gable
301 Wisconsin	1900	NC	2-story, additions, alterations
305 Wisconsin	1901	NC, C	Gabled, altered, new siding/windows
306 Wisconsin	1901	C, C	Gabled, stucco
307 Wisconsin	1901	NC, C	Gabled, altered, new siding/windows
309 Wisconsin	1910	C	2-story, Dan Lamb House
310 Wisconsin	1902	NC, NC	Craftsman, altered
401 Wisconsin	1902	C	Queen Anne, Gust Struve House
405 Wisconsin	1903	NC, NC	2-story, new siding, windows, porch
411 Wisconsin	1968	NC	House
500 Wisconsin	1917	NC	Cube, altered
510 Virginia	1904	NC, NC	Side gabled with addition
301 Second	1901	NC, NC	Gabled, additions, new siding/windows
304 Third	2000	NC, NC, NC	Prefab and 2 garages

United States Department of the Interior
National Park Service

National Register of Historic Places
Continuation Sheet

Geddes Historic District (Additional
 Documentation 2023)

Name of Property
 Charles Mix, SD

County and State
 73001737

NR Reference Number

Corner Sixth/Michigan	modern	NC	Metal pole building
Historic Park		IL, NC, NC, NC	Papineau's Cabin ind. listed; others are moved in

United States Department of the Interior
National Park Service

**National Register of Historic Places
Continuation Sheet**

Geddes Historic District (Additional
Documentation 2023)

Name of Property
Charles Mix, SD

County and State
73001737

NR Reference Number

Sample of Extant Historic Buildings

(With select history from *The Epic of Papineau's Domain*, Adeline S. Gnirck, editor)



308 Main. Built as the Farmers Meat Market around 1901. In its early years was also the Home Restaurant, Montago Café, Joe Fry Harness Shop, and Kaita Hardware. The Charles Mix County News moved here in 1946 and had a long-time association.

United States Department of the Interior
National Park Service

**National Register of Historic Places
Continuation Sheet**

Geddes Historic District (Additional
Documentation 2023)

Name of Property
Charles Mix, SD

County and State
73001737

NR Reference Number



300 Main. Bank of Geddes. C.W. Pratt constructed this building in 1908 utilizing pressed brick, Bedford limestone, and variegated marble on the interior. The bank closed around 1927. Subsequent business included Mrs. Miller's Ladies Hat Shoppe, Drs. Privet and Klare, the Beauty Shop, and Red Oaks Bar.

**United States Department of the Interior
National Park Service**

**National Register of Historic Places
Continuation Sheet**

Geddes Historic District (Additional
Documentation 2023)

Name of Property
Charles Mix, SD

County and State
73001737

NR Reference Number



218 Main. Charles Mix County Bank. Built around 1906 next to the original wood bank. This building survived the 1924 fire and later became the Security State Bank.

**United States Department of the Interior
National Park Service**

**National Register of Historic Places
Continuation Sheet**

Geddes Historic District (Additional
Documentation 2023)

Name of Property
Charles Mix, SD

County and State
73001737

NR Reference Number



409 Main. This building was originally the library. C.W. Pratt constructed it and his daughter Mary was the first librarian. In later years the building was used as a business and residence.

**United States Department of the Interior
National Park Service**

**National Register of Historic Places
Continuation Sheet**

Geddes Historic District (Additional
Documentation 2023)

Name of Property
Charles Mix, SD

County and State
73001737

NR Reference Number



201 Main. Was originally Welsh Implement. Later housed the following businesses: John Stork Garage, Scott Bros Ford Garage, Henry Florey Garage, Z.C.B.J. Lodge, Dimick Repair, Pat Schulte Repair, and Jim Srstka Welding and Repair.

**United States Department of the Interior
National Park Service**

**National Register of Historic Places
Continuation Sheet**

Geddes Historic District (Additional
Documentation 2023)

Name of Property
Charles Mix, SD

County and State
73001737

NR Reference Number



605 Second Street. This was M. Peterson Concrete, Livery, and Feed Barn. Later became a garage and repair shop.

United States Department of the Interior
National Park Service

National Register of Historic Places
Continuation Sheet

Geddes Historic District (Additional
Documentation 2023)

Name of Property
Charles Mix, SD

County and State
73001737

NR Reference Number



519 Main. Fred Noll House. Other owners include: Ben McFarland, Elmer Blair, the Reverend Ronald Rice, and Robert Srstka.

United States Department of the Interior
National Park Service

National Register of Historic Places
Continuation Sheet

Geddes Historic District (Additional
Documentation 2023)

Name of Property
Charles Mix, SD

County and State
73001737

NR Reference Number



401 Wisconsin. Gus Struve built this house. Other owners include: the Reverend Father Burke, W.E. Beck, and Tom Simpson.

United States Department of the Interior
National Park Service

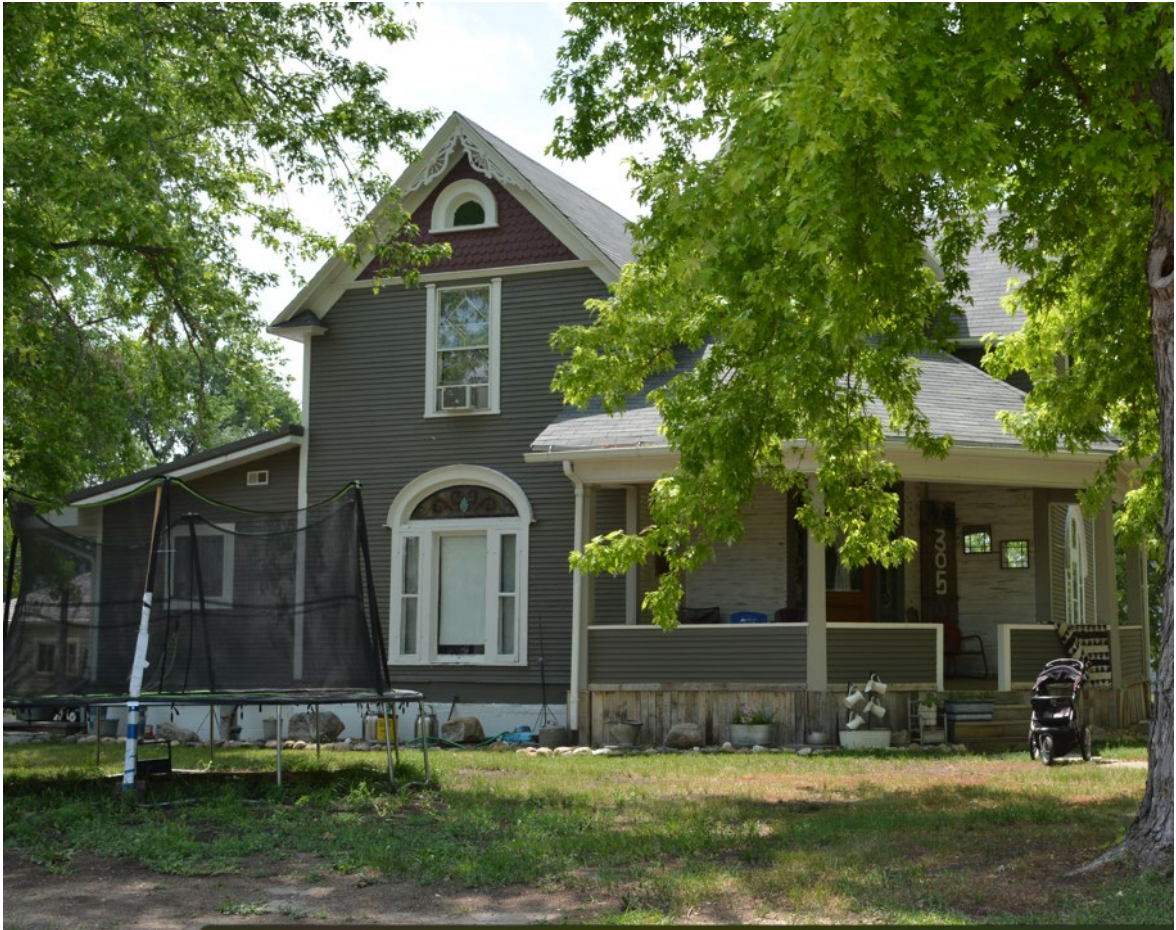
National Register of Historic Places
Continuation Sheet

Geddes Historic District (Additional
Documentation 2023)

Name of Property
Charles Mix, SD

County and State
73001737

NR Reference Number



305 Michigan. G.W. Morrows built this house. Dr. Seapy became the owner, and subsequent owners include: W.A. Lathrop, William Young, Frank Bowen, and Wayne Nobles.

**United States Department of the Interior
National Park Service**

**National Register of Historic Places
Continuation Sheet**

Geddes Historic District (Additional
Documentation 2023)

Name of Property
Charles Mix, SD

County and State
73001737

NR Reference Number



210 Michigan. Gus Struve built this house for his family. Other owners include Helen and James Early and Wayne and Sharon Noble.

United States Department of the Interior
National Park Service

National Register of Historic Places
Continuation Sheet

Geddes Historic District (Additional
Documentation 2023)

Name of Property
Charles Mix, SD

County and State
73001737

NR Reference Number

Main Street - Changes



200 Block of Main Ave (west side). Padley Hotel and false-fronts buildings circa 1973 (top) and today (bottom).
(Top photo courtesy South Dakota State Archives)

**United States Department of the Interior
National Park Service**

**National Register of Historic Places
Continuation Sheet**

Geddes Historic District (Additional
Documentation 2023)

Name of Property
Charles Mix, SD

County and State
73001737

NR Reference Number



300 Block of Main Ave (west side). Photos c.1973 and today. (Top photo courtesy South Dakota State Archives)

**United States Department of the Interior
National Park Service**

**National Register of Historic Places
Continuation Sheet**

Geddes Historic District (Additional
Documentation 2023)

Name of Property

Charles Mix, SD

County and State

73001737

NR Reference Number



200 Block of Main Ave (east side). Photos c.1999 and 2023. (Left photo courtesy South Dakota State Archives)



300 Block of Main Ave (east side). Photos c.1973 and 2023. (Left photo courtesy of South Dakota State Archives)



300 Block of Main Ave (east side). Photos c.1973 and 2023. (Left photo courtesy of South Dakota State Archives)

**United States Department of the Interior
National Park Service**

**National Register of Historic Places
Continuation Sheet**

Geddes Historic District (Additional
Documentation 2023)

Name of Property
Charles Mix, SD

County and State
73001737

NR Reference Number



400 Block of Main Ave (west side). Photos c.1999 and 2023. (Left photo courtesy South Dakota State Archives)



St. Anne's Catholic Church. Photos c.1973 and 2023. (Left photo courtesy of South Dakota State Archives)



Struve Block. Photos c.1999 and 2023. (Left photo courtesy South Dakota State Archives)

**United States Department of the Interior
National Park Service**

**National Register of Historic Places
Continuation Sheet**

Geddes Historic District (Additional
Documentation 2023)

Name of Property
Charles Mix, SD

County and State
73001737

NR Reference Number



Padley Hotel, 207 Main. Photos c.1973 and today. (Left photo courtesy South Dakota State Archives).



Café and old newspaper office, 301-303 Main. Photos c.1973 and today. (Left photo courtesy South Dakota State Archives)

United States Department of the Interior
National Park Service

National Register of Historic Places
Continuation Sheet

Geddes Historic District (Additional
Documentation 2023)

Name of Property
Charles Mix, SD

County and State
73001737

NR Reference Number

Selection of Demolished Residential Buildings



C.W. Pratt House, later high school dormitory. (Photo courtesy South Dakota State Archives)



John Bell House. (Photo courtesy South Dakota State Archives)

United States Department of the Interior
National Park Service

National Register of Historic Places
Continuation Sheet

Geddes Historic District (Additional
Documentation 2023)

Name of Property
Charles Mix, SD

County and State
73001737

NR Reference Number



Residence. (Photo courtesy South Dakota State Archives)



W.E. Sparks House. (Photo courtesy South Dakota State Archives)

United States Department of the Interior
National Park Service

National Register of Historic Places
Continuation Sheet

Geddes Historic District (Additional
Documentation 2023)

Name of Property
Charles Mix, SD

County and State
73001737

NR Reference Number



603 5th St. (Photo courtesy South Dakota State Archives)



301 Iowa. (Photo courtesy South Dakota State Archives)

**United States Department of the Interior
National Park Service**

**National Register of Historic Places
Continuation Sheet**

Geddes Historic District (Additional
Documentation 2023)

Name of Property
Charles Mix, SD

County and State
73001737

NR Reference Number



403 Minnesota. (Photo courtesy South Dakota State Archives)



408 Missouri. (Photo courtesy South Dakota State Archives)

United States Department of the Interior
National Park Service

National Register of Historic Places
Continuation Sheet

Geddes Historic District (Additional
Documentation 2023)

Name of Property
Charles Mix, SD

County and State
73001737

NR Reference Number



Geddes School. (Photo courtesy South Dakota State Archives)

**United States Department of the Interior
National Park Service**

Geddes Historic District (Additional
Documentation 2023)

Name of Property
Charles Mix, SD

County and State
73001737

NR Reference Number

**National Register of Historic Places
Continuation Sheet**

9. Major Bibliographical References

Gnirk, Adeline S., editor. *The Epic of Papineau's Domain*. Gregory, SD: Plains Printing Company, 1986.

10. Geographical Data

**Or
UTM References**

Datum (indicated on USGS map):

NAD 1927 or NAD 1983

	Z	Easting	Northing
1.	14	524083	4789231
2.	14	524314	4789236
3.	14	524314	4789283
4.	14	524359	4789281
5.	14	524357	4789357
6.	14	524479	4789358
7.	14	524481	4789302
8.	14	524578	4789303
9.	14	524576	4789233
10.	14	524571	4789233
11.	14	525080	4788676
12.	14	524146	4788674
13.	14	524124	4789004
14.	14	524083	4789000

11. Form Prepared By

name/title: CB Nelson
organization: SD SHPO
street & number: 900 Governors Drive
city or town: Pierre state: SD zip code: 57501
e-mail: chrisb.nelson@state.sd.us
telephone: N/A
date: 1 October 2023

**United States Department of the Interior
National Park Service**

**National Register of Historic Places
Continuation Sheet**

Geddes Historic District (Additional
Documentation 2023)

Name of Property
Charles Mix, SD

County and State
73001737

NR Reference Number

Additional Documentation

Submit the following items with the completed form:

- **Maps:** A **USGS map** or equivalent (7.5 or 15 minute series) indicating the property's location.
- **Sketch map** for historic districts and properties having large acreage or numerous resources. Key all photographs to this map.
- **Additional items:** (Check with the SHPO, TPO, or FPO for any additional items.)

Photographs

Submit clear and descriptive photographs. The size of each image must be 1600x1200 pixels (minimum), 3000x2000 preferred, at 300 ppi (pixels per inch) or larger. Key all photographs to the sketch map. Each photograph must be numbered and that number must correspond to the photograph number on the photo log. For simplicity, the name of the photographer, photo date, etc. may be listed once on the photograph log and doesn't need to be labeled on every photograph.

Photo Log

Name of Property: Geddes Historic District Additional Documentation 2023

City or Vicinity: Geddes

County: Charles Mix

State: SD

Photographer: Liz Almlie

Date Photographed: 1 August 2023

Description of Photograph(s) and number, include description of view indicating direction of camera:

United States Department of the Interior
National Park Service**National Register of Historic Places**
Continuation SheetGeddes Historic District (Additional
Documentation 2023)Name of Property
Charles Mix, SDCounty and State
73001737

NR Reference Number

Paperwork Reduction Act Statement: This information is being collected for nominations to the National Register of Historic Places to nominate properties for listing or determine eligibility for listing, to list properties, and to amend existing listings. Response to this request is required to obtain a benefit in accordance with the National Historic Preservation Act, as amended (16 U.S.C.460 et seq.). We may not conduct or sponsor and you are not required to respond to a collection of information unless it displays a currently valid OMB control number.

Estimated Burden Statement: Public reporting burden for each response using this form is estimated to be between the Tier 1 and Tier 4 levels with the estimate of the time for each tier as follows:

Tier 1 – 60-100 hours

Tier 2 – 120 hours

Tier 3 – 230 hours

Tier 4 – 280 hours

The above estimates include time for reviewing instructions, gathering and maintaining data, and preparing and transmitting nominations. Send comments regarding these estimates or any other aspect of the requirement(s) to the Service Information Collection Clearance Officer, National Park Service, 1201 Oakridge Drive Fort Collins, CO 80525.

United States Department of the Interior
National Park Service

National Register of Historic Places
Continuation Sheet

Geddes Historic District (Additional
Documentation 2023)

Name of Property
Charles Mix, SD

County and State
73001737

NR Reference Number



SD_CharlesMixCounty_GeddesHistoricDistrictAdditionalDocumentation_0001. Looking East at
102 Michigan.

United States Department of the Interior
National Park Service

National Register of Historic Places
Continuation Sheet

Geddes Historic District (Additional
Documentation 2023)

Name of Property
Charles Mix, SD

County and State
73001737

NR Reference Number



SD_CharlesMixCounty_GeddesHistoricDistrictAdditionalDocumentation_0002. Looking NW at 200 block of Main Street (west side).

United States Department of the Interior
National Park Service

National Register of Historic Places
Continuation Sheet

Geddes Historic District (Additional
Documentation 2023)

Name of Property
Charles Mix, SD

County and State
73001737

NR Reference Number



SD_CharlesMixCounty_GeddesHistoricDistrictAdditionalDocumentation_0003. Looking East at 204 Michigan.

United States Department of the Interior
National Park Service

National Register of Historic Places
Continuation Sheet

Geddes Historic District (Additional
Documentation 2023)

Name of Property
Charles Mix, SD

County and State
73001737

NR Reference Number



SD_CharlesMixCounty_GeddesHistoricDistrictAdditionalDocumentation_0004. Looking East
at 210 Michigan.

United States Department of the Interior
National Park Service

National Register of Historic Places
Continuation Sheet

Geddes Historic District (Additional
Documentation 2023)

Name of Property
Charles Mix, SD

County and State
73001737

NR Reference Number



SD_CharlesMixCounty_GeddesHistoricDistrictAdditionalDocumentation_0005. Looking West at 211 Wisconsin.

**United States Department of the Interior
National Park Service**

**National Register of Historic Places
Continuation Sheet**

Geddes Historic District (Additional
Documentation 2023)

Name of Property
Charles Mix, SD

County and State
73001737

NR Reference Number



SD_CharlesMixCounty_GeddesHistoricDistrictAdditionalDocumentation_0006.
Looking East at 218 Main Street.

United States Department of the Interior
National Park Service

National Register of Historic Places
Continuation Sheet

Geddes Historic District (Additional
Documentation 2023)

Name of Property
Charles Mix, SD

County and State
73001737

NR Reference Number



SD_CharlesMixCounty_GeddesHistoricDistrictAdditionalDocumentation_0007.
Looking East at the 300 Block Main Street (east side).

**United States Department of the Interior
National Park Service**

**National Register of Historic Places
Continuation Sheet**

Geddes Historic District (Additional
Documentation 2023)

Name of Property
Charles Mix, SD

County and State
73001737

NR Reference Number



SD_CharlesMixCounty_GeddesHistoricDistrictAdditionalDocumentation_0008.
Looking West at 300 Block of Main Street (west side).

United States Department of the Interior
National Park Service

National Register of Historic Places
Continuation Sheet

Geddes Historic District (Additional
Documentation 2023)

Name of Property
Charles Mix, SD

County and State
73001737

NR Reference Number



SD_CharlesMixCounty_GeddesHistoricDistrictAdditionalDocumentation_0009.
Looking SE at 304 Main Street.

United States Department of the Interior
National Park Service

National Register of Historic Places
Continuation Sheet

Geddes Historic District (Additional
Documentation 2023)

Name of Property
Charles Mix, SD

County and State
73001737

NR Reference Number



SD_CharlesMixCounty_GeddesHistoricDistrictAdditionalDocumentation_0010.
Looking SW at 305 Michigan.

United States Department of the Interior
National Park Service

National Register of Historic Places
Continuation Sheet

Geddes Historic District (Additional
Documentation 2023)

Name of Property
Charles Mix, SD

County and State
73001737

NR Reference Number



SD_CharlesMixCounty_GeddesHistoricDistrictAdditionalDocumentation_0011.
Looking West at 409 Main Street.

United States Department of the Interior
National Park Service

National Register of Historic Places
Continuation Sheet

Geddes Historic District (Additional
Documentation 2023)

Name of Property
Charles Mix, SD

County and State
73001737

NR Reference Number



SD_CharlesMixCounty_GeddesHistoricDistrictAdditionalDocumentation_0012.
Looking SW at 401 Wisconsin.

United States Department of the Interior
National Park Service

National Register of Historic Places
Continuation Sheet

Geddes Historic District (Additional
Documentation 2023)

Name of Property
Charles Mix, SD

County and State
73001737

NR Reference Number



SD_CharlesMixCounty_GeddesHistoricDistrictAdditionalDocumentation_0013.
Looking East at Papineau's Cabin (IL).

**United States Department of the Interior
National Park Service**

**National Register of Historic Places
Continuation Sheet**

Geddes Historic District (Additional
Documentation 2023)

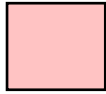
Name of Property
Charles Mix, SD

County and State
73001737

NR Reference Number



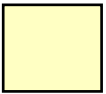
SD_CharlesMixCounty_GeddesHistoricDistrictAdditionalDocumentation_0014.
Looking SW at 300 Block of Main Street (east side).



C



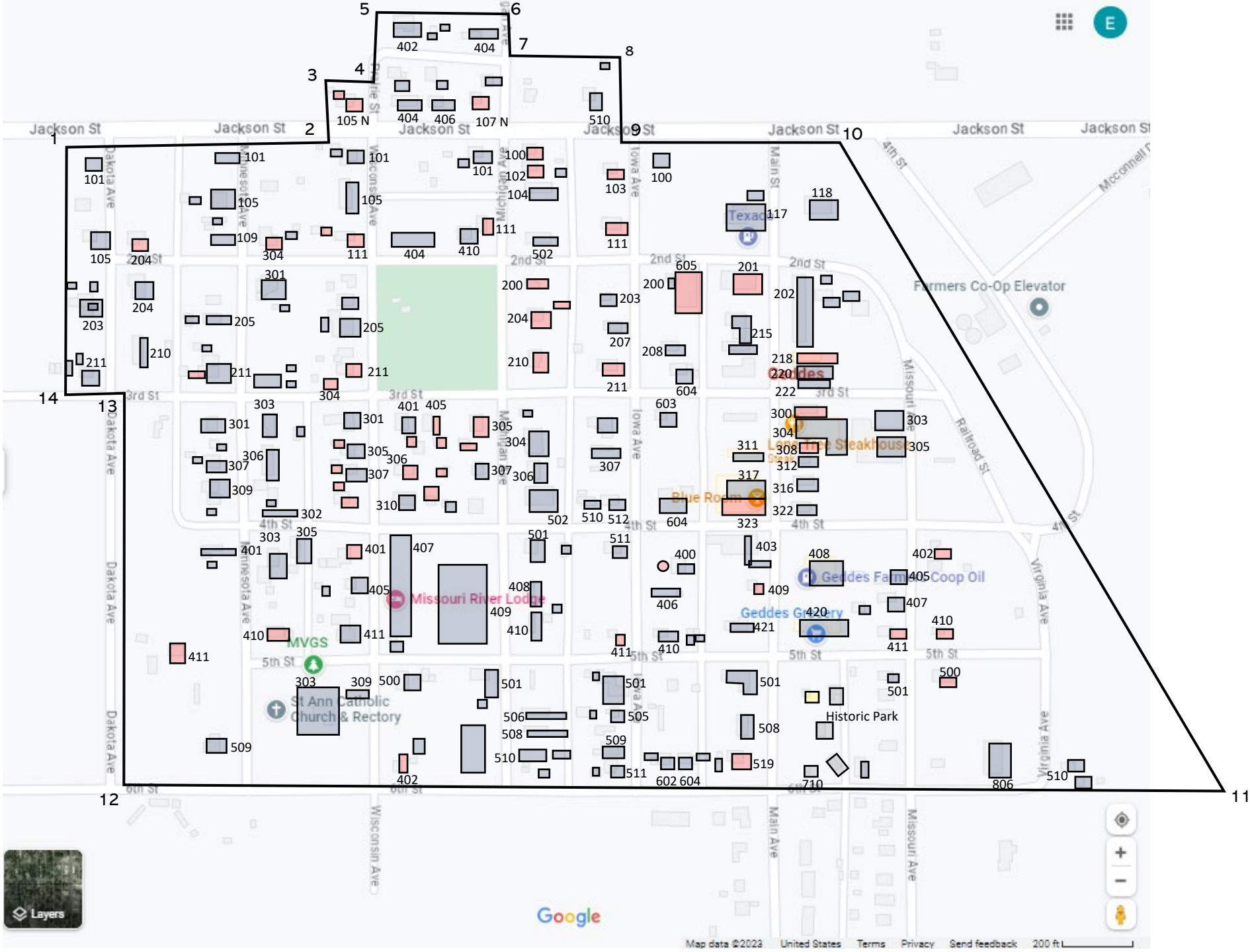
NC



IL



District Boundary



Google