

OAHE CHAPEL NEWS

Winter 2025

Newsletter of the Oahe Chapel Preservation Society

Pierre, SD

Oahe Chapel Preservation Society Board of Directors

Mary Jo Gourneau
President

Duncan Trau
Vice President

Katie Goss
Secretary/Treasurer

Rev. David Hussey
Ministerial Association
Rep.

Shane Carnahan
USACE Rep.

Katie Wasley

Jim Glover

Jennifer Hanna

Bruce Johnson

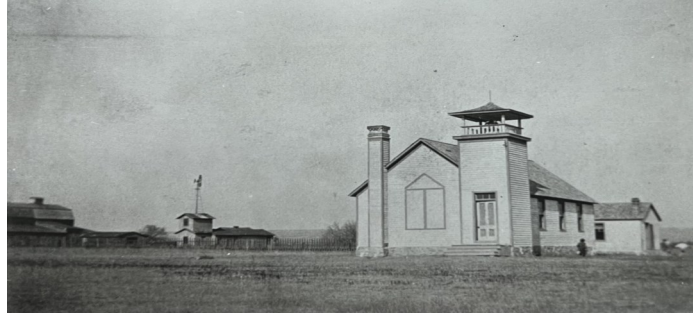
Braeden Kluver (Official in Spring)

The Oahe Chapel Preservation Society was founded in 1984 to preserve and maintain the historic Oahe Chapel. The Society is a nonprofit organization and all costs are funded through annual memberships, rental fees, donations, and fundraisers!

We currently have open slots on our Board, if you are interested in potentially becoming a Board Member please reach out to us!

Oahe Chapel by the Numbers

Did you know that the Oahe Chapel is older than South Dakota's statehood? That is just one of many fascinating statistics!



Over the last decade...

31 couples were married at the Oahe Chapel

14 other rentals occurred (baptisms, memorial services, meetings, and more!)

8 Pizza Ranch fundraiser nights were had

over **250** pies served at the summer Pie Social

118 people became members of the Oahe Chapel Preservation Society

6 major rehabilitation projects were conducted

Roof Repairs on the Chapel

The Oahe Chapel is seated high above Lake Oahe, the fourth largest man-made lake in the US, on the largest rolled earth dam on the Missouri River. Due to this prominent positioning and elevation, the Chapel often experiences heavy winds and extreme weather that many South Dakotans are accustomed to. In 2024, repairs were made to the roof following damage after an intense Spring wind storm. The repairs ensure that the outside exterior envelope of the historic Chapel is buttoned up for years to come. Similarly, these repairs will ensure that the interior and the contents of the Chapel are protected from the elements. The roof repairs were made in-kind to limit visual change to our beloved Chapel. Luckily, we had, and still have, on hand roofing materials that match the current roof that can be utilized for years to come!



Chapel Event Rentals 2025

The Oahe Chapel can be reserved for weddings, church services, family reunions, baptisms, or other special events, and is available to rent year-round at the cost of \$100 for four hours and, for members, a reduced price of \$75. An additional four hours of rental can be added for \$50. We already have three weddings booked at the Chapel for summer 2025! The Oahe Chapel provides a unique setting and a beautiful view to make any event memorable! For more information, including how to apply to rent the Chapel, please call (605)773-3458 or send an email to Oahe.Chapel@state.sd.us



Memberships and Donations

The Oahe Chapel Preservation Society memberships and donations are available online! The website can be accessed by scanning this QR code. Mail-in memberships and donations are still available, one is attached below. Thank you to all our generous members and donors!



Pizza Ranch Fundraising Opportunity



The Oahe Chapel Preservation Society is hosting a fundraiser at the Pizza Ranch in Fort Pierre on February 19th, 2025 from 5:00 to 8:00 P.M.! The Oahe Chapel will receive a portion of any dine in, carry out, and delivery orders during this time. All money we gather will go towards the continued preservation of the Oahe Chapel. We would love to see you there!



Check us out on Facebook by searching 'Oahe Chapel Preservation Society'!

Contact us at:

(605)773-3458 Oahe.Chapel@state.sd.us <https://history.sd.gov/preservation/oahechapel.aspx>

Oahe Chapel Preservation Society Membership Form

Membership investment is for one year. Members will receive the annual Oahe Chapel News to keep up-to-date with current projects at the Oahe Chapel. Members are also eligible to rent the chapel at a reduced rate of \$75. Donations are tax deductible where allowed by law. Please detach this form and mail to the address below with check payable to: Oahe Chapel Preservation Society

Oahe Chapel Preservation Society PO Box 7201 Pierre, SD 57501

NAME: _____

ADDRESS: _____

CITY: _____ STATE: _____ ZIP: _____

EMAIL ADDRESS (optional): _____

	New Member	Renewal	*Donation Only \$ _____
Sustaining Membership	\$500.00	Family Membership	\$40.00
Patron Membership	\$100.00	Individual Membership	\$25.00 Additional Donation \$ _____

