

United States Department of the Interior  
National Park Service

# National Register of Historic Places Continuation Sheet

Section Number 7 Page 1

### 1. Name of Property

Historic name: Rapid City Historic Commercial District 2018 Amendment (Reclassification)

Other names/site number: N/A

Name of related multiple property listing:

N/A

(Enter "N/A" if property is not part of a multiple property listing)

### 2. Location

Street & number: Roughly Main and St. Joseph Sts., primarily between Mt. Rushmore Rd. and Fifth St., including Aby Complex

City or town: Rapid City State: SD County: Pennington

Not For Publication:  Vicinity:

### 3. State/Federal Agency Certification

As the designated authority under the National Historic Preservation Act, as amended,

I hereby certify that this x nomination \_\_\_ request for determination of eligibility meets the documentation standards for registering properties in the National Register of Historic Places and meets the procedural and professional requirements set forth in 36 CFR Part 60.

In my opinion, the property x meets \_\_\_ does not meet the National Register Criteria. I recommend that this property be considered significant at the following level(s) of significance:

\_\_\_ national \_\_\_ statewide x local

Applicable National Register Criteria:

x A \_\_\_ B x C \_\_\_ D

Signature of certifying official/Title:

Date

State or Federal agency/bureau or Tribal Government

United States Department of the Interior  
National Park Service

# National Register of Historic Places Continuation Sheet

Section Number 7 Page 2

In my opinion, the property \_\_\_ meets \_\_\_ does not meet the National Register criteria.

Signature of commenting official:

Date

Title :

State or Federal agency/bureau  
or Tribal Government

#### 4. National Park Service Certification

I hereby certify that this property is:

- entered in the National Register
- determined eligible for the National Register
- determined not eligible for the National Register
- removed from the National Register
- other (explain:) \_\_\_\_\_

Signature of the Keeper

Date of Action

United States Department of the Interior  
National Park Service

# National Register of Historic Places Continuation Sheet

Section Number 7 Page 3

## 5. Classification

### Ownership of Property

(Check as many boxes as apply.)

Private:

Public – Local

Public – State

Public – Federal

### Category of Property

(Check only **one** box.)

Building(s)

District

Site

Structure

Object

Name of Property

County and State

United States Department of the Interior  
National Park Service

# National Register of Historic Places Continuation Sheet

Section Number 7 Page 4

### Number of Resources within Property

(Do not include previously listed resources in the count)

Contributing	Noncontributing	
<u>46</u>	<u>20</u>	buildings
<u>0</u>	<u>1</u>	sites
<u>1</u>	<u>0</u>	structures
<u>0</u>	<u>0</u>	objects
<u>47</u>	<u>21</u>	Total

Number of contributing resources previously listed in the National Register 68

### 6. Function or Use

#### Historic Functions

(Enter categories from instructions.)

- Domestic: Multiple Dwelling, Hotel
- Social: Meeting Hall, Civic
- Commerce/Trade: Business, Professional, Organizational, Financial Institution, Specialty Store
- Commerce/Trade: Department Store, Restaurant, Warehouse
- Government: City Hall, Fire Station, Post Office, Courthouse
- Recreation and Culture: Theater
- Industry: Industrial Storage
- Agriculture: Processing, Storage

#### Current Functions

(Enter categories from instructions.)

- Domestic: Multiple Dwelling, Hotel
- Social: Meeting Hall
- Landscape: Park

United States Department of the Interior  
National Park Service

# National Register of Historic Places Continuation Sheet

Section Number 7 Page 5

Commerce/Trade: Business

Commerce/Trade: Business, Professional, Organizational, Financial Institution, Specialty Store

Commerce/Trade: Department Store, Restaurant, Warehouse

Recreation and Culture: Theater

Industry: Industrial Storage

Agriculture: Processing, Storage

## 7. Description

### Architectural Classification

(Enter categories from instructions.)

Late Victorian: Italianate, Romanesque

Late 19<sup>th</sup> and 20<sup>th</sup> Century Revivals: Colonial Revival, Tudor Revival

Late 19<sup>th</sup> Century and Early 20<sup>th</sup> Century American Movements: Bungalow/Craftsman, Commercial style

Late 19<sup>th</sup> Century and Early 20<sup>th</sup> Century American Movements: Chicago,

Modern Movement: Art Deco, International

Mixed

**Materials:** (enter categories from instructions.)

Principal exterior materials of the property: Foundation: Concrete, Stone; Walls: Brick, Sandstone, Granite, Limestone, Cast Iron, Stucco, Concrete, Glass

United States Department of the Interior  
National Park Service

# National Register of Historic Places Continuation Sheet

Section Number 7 Page 6

## Narrative Description

(Describe the historic and current physical appearance and condition of the property. Describe contributing and noncontributing resources if applicable. Begin with a **summary paragraph** that briefly describes the general characteristics of the property, such as its location, type, style, method of construction, setting, size, and significant features. Indicate whether the property has historic integrity.)

## Summary Paragraph

The original Rapid City Historic Commercial District was listed in the National Register in 1974. It did not list a structure count and had a period of significance of 1881-1924. The nomination was amended in 1998. All resources within the 1974 boundary were recounted and reclassified as contributing or noncontributing. The amendment also increased the boundary adding 30 more resources to the district. The period of significance was also changed to 1876-1948.

The district was resurveyed in 2017. Resources were reclassified as contributing and noncontributing. The updated (2018) classification count is 47 contributing properties and 21 noncontributing properties. The boundary and period of significance established in the 1998 amendment remain the same. Additionally, the 1998 amendment included two noncontributing statues in the resource count. Since 1998, approximately 20 statues have been added throughout the district. These statues do not strongly contribute to the district's significance. The two statues listed in the 1998 resource count have been removed from this inventory; no statues are counted in the 2018 update.

The overall setting of the district has changed minimally since the 1998 amendment. Trees have matured since the city reconstructed the sidewalks in the early 1990s and more statues have been added as noted previously. The most notable change is the addition of Main Street Square, located at the intersection of Main and Sixth Streets. The square is an activity venue that hosts outdoor concerts and events. The square contains statues and a fountain, but no buildings or permanent structures.

United States Department of the Interior  
National Park Service

# National Register of Historic Places Continuation Sheet

Section Number 7 Page 7

## Notes to Accompany the Following Resource Inventory

The address, year built, and NR status has been included for each property in this inventory. A short architectural description has been provided for each property. Historic and/or commonly-associated names have been included for some buildings. Some buildings do not have historic or commonly-associated names, many times due to their utilitarian architecture and/or lack of a long-term association with a business. For these properties, only an address is used.

The 1998 amendment assigned each property a number that corresponds to a map. Those numbers were retained in the 2018 amendment. In the 2018 amendment, there are a few minor gaps in this numbering system. This is due to the removal of properties from the resource count. Some properties, like the statues, were not included in the updated count. Other buildings, with more than one storefront, were counted as multiple resources in 1998, when in fact they are a single building comprised of one taxable unit. Those properties are now counted as single buildings.

**#1**

**430 Main (Gambles/Furniture Mart)**

**1947**

**C**

**Description: This building has tan brick laid in a common bond. It is one story with a rectangular plan and flat roof. The main entrance is located at the southwest corner. The building has large plate glass display windows, stainless steel doors and window frames, and restrained Art Deco ornament.**

**#2**

**502 Main Street (Que Pasa)**

**2010**

**NC**

**Description:** This building is modern with a brick veneer in a stretcher bond. It is one story with a flat roof that steps back towards the alley. It has a rooftop porch with metal railing. Facing Fifth Street, there is a shed-roofed portion and a large awning. The main entrance faces Main Street and contains a central door flanked by large windows with fixed transoms above.

United States Department of the Interior  
National Park Service

## National Register of Historic Places Continuation Sheet

Section Number 7 Page 8

#3

**508 Main Street**

**1906**

**C**

**Description:** This building is a separate building but used as part of the neighboring restaurant at 502 Main Street. It is built of stamped metal and brick in a stretcher bond. It is one story with a rectangular plan. The roof is flat. The entrance is centered and recessed. It has a decorative Italianate cornice.

#4

**510 Main Street (Mitzi's Books)**

**2010**

**NC**

**Description:** This is a modern building veneered with light-colored, grayish brown brick laid in a stretcher bond. The building is set back from the sidewalk. It has a central entrance with sidelights. The entrance is flanked by two-part windows and there is an awning. Above the awning are two-part windows and the name "MITZI'S BOOKS" centered.

#5

**512 Main Street (Sears, Shops at Main Street Square)**

**1947**

**NC**

**Description:** This is a utilitarian building with International influences. The brick is tan and laid in a stretcher bond. The building is two stories with a flat roof and rectangular plan. The façade has two commercial spaces on the first floor with plate glass display windows and entrances to the second floor. The second floor has two ribbons of twelve 1/1 windows. The west elevation faces the new Main Street Square. Six storefronts with glass display windows have been cut into the first floor of the west elevation. On the second floor, 1/1 windows have been cut into the west elevation. These changes render the building non-contributing.

#6

**513-519 Main Street**

**1925**

**C**

**Description:** This building is a utilitarian building with brick laid in a stretcher bond. It is one story with a flat roof and rectangular plan. It contains two storefronts with plate glass and steel display windows. The storefronts have steel transoms and recessed entrances. There is a simple brick cornice.



United States Department of the Interior  
National Park Service

## National Register of Historic Places Continuation Sheet

Section Number 7 Page 9

#7

**521 Main Street**

**1930**

**C**

**Description:** This is a utilitarian building with brick laid in a stretcher bond. It is one story with a flat roof and rectangular plan. The storefront contains plate glass and steel display windows. It has steel transoms and a recessed entrance. It has a simple cornice and matches the design of 513-519 Main Street.

#8

**523 Main Street**

**1930**

**C**

**Description:** This is a utilitarian building with brick laid in a stretcher bond. It is one story with a flat roof and rectangular plan. The storefront has plate glass and steel display windows and a central recessed entrance. It has a simple decorative brick cornice.

#9

**601 Main Street (Pennington County Bank, Neugebauer's Jewelry)**

**1915**

**C**

**Description:** This building is Classical Revival composed of granite, sandstone, steel, and iron. It is two stories with a flat roof and rectangular plan. There are seven bays on the east side and three bays on the north side. The main entrance is on the north elevation and a secondary entrance is located on the east side towards the south. The first floor contains large plate glass windows with transoms. The main entrance has wood doors with transoms and stone balusters above the entrance. The second floor contains 1/1 windows. The building has a decorative cornice.

**\*NOTE:** The building addressed 603 Main sits in between the buildings at 601 and 605-607 Main; 603 Main is part of the Haines Block (#62 – 507 6<sup>th</sup> Street) and is described with that property. It is an irregularly-shaped building with frontage on Main and Sixth Streets. It's primary frontage is 6<sup>th</sup> Street.

United States Department of the Interior  
National Park Service

## National Register of Historic Places Continuation Sheet

Section Number 7 Page 10

**#10**

**605-607 Main Street**

**1915**

**C**

**Description:** This is Commercial Style building with brick laid in a running bond with sandstone. It is two stories with a flat roof and a rectangular plan. The first story has large plate glass display windows and recessed entrances capped by transoms. The second story has four large Commercial-style windows with stone trim. H.E. Waldron designed the building.

**#11**

**606 Main Street (Clower Building, Evans-Poznonsky-Morris Block, Prairie Edge)**

**1886**

**C**

**Description:** This building is Italianate with brick laid in a stretcher bond and stone of contrasting colors. It is two stories with a flat roof. It has an ornate cornice composed of metal and wood with finials. The first floor has cast iron columns and large glass storefronts covered with cloth awnings. Second-floor windows are 1/1 arched windows with ornate brick hoods with keystones. This building was elaborately restored in the early 1990s. It is the finest high-style Italianate building in the city. It was originally occupied by "Big Jack" Clower's Saloon, a notorious drinking establishment.

**#12**

**609 Main Street (Collidge & Brother)**

**1886**

**C**

**Description:** This is a Romanesque building with brick laid in a stretcher bond and stone trim. It has two stories and a flat roof. The storefront has a recessed entrance with large plate glass surrounds. The second floor has two arched bays filled with 1/1 windows topped with fixed-pane arched windows. It has an elaborate cornice with brackets, scroll designs, and finials.

**#13**

**610-612 Main Street (Rapid City Fire Hall, Firehouse Brewing)**

**1915**

**C**

**Description:** This building is Chicago School with brick that is laid in a running bond and also patterned, primarily in a herring bone design. It is a two-story building with a flat roof and rectangular plan. The first floor has five bays with segmented arches and a large center bay with two garage doors; these doors are flanked

United States Department of the Interior  
National Park Service

## National Register of Historic Places Continuation Sheet

Section Number 7 Page 11

by two smaller doors. The second floor has three bays with Chicago-style windows with sidelights and transoms; it also contains the nameplate "1915". W.W. Beach and Co. was the architect.

**#14**  
**611 Main Street**  
**1891**  
**C**  
**Description:** This building is Romanesque with brick laid in a running bond and incorporates stone and wood. It is two stories with a flat roof and rectangular plan. The storefront has a recessed entrance flanked by large glass windows and transoms. The second floor has large, segmented-arch window openings that contain 1/1 windows topped with fixed-pane windows. It has a heavy decorative wooden cornice with brackets and scroll designs.

**#15**  
**613 Main Street**  
**1891/1930s**  
**C**  
**Description:** This building is Art Deco with a stone and brick veneer. It has three stories and a flat roof. The storefront has ceramic metal (1957) panels. The second and third floors have recessed bays with 4/1 windows and a decorative floral stone relief. This building used to be identical to 611 Main Street, but was updated in the 1930s to its present Art Deco appearance.

**#16**  
**615 Main Street (McNamara Brothers Building)**  
**1914**  
**C**  
**Description:** This building is Commercial with some Neoclassical ornamentation. It features brick laid in a running bond and stone accents. It has two stories and a flat roof. The storefront has wood frames and plate glass with large transoms and a recessed entrance. The second floor has two bays with 1/1 windows and three sets of double-brick pilasters with a concrete base and capital. There is also a decorative cornice.

United States Department of the Interior  
National Park Service

## National Register of Historic Places Continuation Sheet

Section Number 7 Page 12

**#17**  
**617 Main Street**  
**1930**

**C**

**Description:** This building is Commercial with brick laid in a common bond (6/1). It is three stories with a flat roof. The storefront has plate glass windows with recessed entries and transoms. The second and third floors have two bays with tripartite Chicago-style windows.

**#18**  
**616-622 Main Street**  
**1926**

**C**

**Description:** This building is a commercial adaptation of Revival and utilitarian styles with brick laid in a running bond. There are three storefronts that contain plate glass windows, transom windows, and recessed entrances. The second floor mimics the pattern of the storefronts below. The central and eastern portions contain four 1/1 windows. The western portion has two tripartite windows. There is a moderately stylized brick cornice.

**#19**  
**619 Main Street (Rise Building)**  
**1926**

**C**

**Description:** This is a Commercial building with brick laid in an English bond (6/1). It has three stories and a flat roof. The storefront has plate glass windows and there is a door to the second floor on the west end. The second and third floors have tripartite Chicago-style windows.

**#20**  
**621 Main Street**  
**1892-1896**

**NC**

**Description:** This is a utilitarian building with brick laid in a running bond. It is one story with a flat roof. The storefront is plate glass and metal.

United States Department of the Interior  
National Park Service

# National Register of Historic Places Continuation Sheet

Section Number 7 Page 13

**#21**

**623-627 Main Street (Woolworth's, Republican Block)**

**1885, façade 1995**

**NC**

**Description:** This building has a modern façade with brick laid in a running bond. It has two stories and a flat roof. The first floor has four recessed entrances and three plate glass windows with wood frames. The second floor has six arched bays with 1/1 windows.

**#22**

**629 Main Street**

**1885, façade 1995**

**NC**

**Description:** This building has a modern façade with tan brick laid in a running bond. It is two stories with a flat roof. The storefront has plate glass with wood frames and a recessed entrance. There is also a second-floor entrance on the west end. The second floor has three bays with a 1/1 window flanked by two tripartite windows.

**#23**

**631 Main Street (First National Bank)**

**1915**

**C**

**Description:** This is a Classical Revival building with brick laid in a running bond and stone columns and trim. It is two stories with a flat roof. The first floor has a main entrance on the north side. It has a metal-and-glass double door with two fluted Ionic columns two-stories tall on either side. The west side of the first floor has ten bays. From north to south the first floor has a 2/2 window, six tripartite windows with transoms, an entrance, paired 1/1 windows, and a recessed metal and glass storefront at the south corner. The second floor has a 2/2 window, seven tripartite windows, a 2/2 window and two 1/1 windows.

**#24**

**632 Main (First National Bank)**

**1979**

**NC**

**Description:** This is a modern building with brick laid in a running bond. It has two stories, flat roof, and a rectangular plan. The primary entrance is on Main Street. The east and west elevations have six-bays of single-pane metal frame windows.

United States Department of the Interior  
National Park Service

## National Register of Historic Places Continuation Sheet

Section Number 7 Page 14

**#25**

**701-707 Main Street**

**1999**

**NC**

**Description:** This is a modern building constructed on the site of the Sweeney Hardware Company building which burned in 1997. The building has brick laid in a running bond and a flat roof. Primary entrance is at the corner. Second-floor was arched window openings with keystones. Main floor has storefronts of single and double widths.

**#26**

**510 St. Joseph Street (Curry Masala)**

**1931**

**C**

**Description:** This is a Commercial building with brick laid in a running bond. It has two stories and a flat roof. The first floor has plate glass display windows with an entrance recessed on the west side. The second floor has two sets of coupled 1/1 double hung windows.

**#27**

**514-516 St. Joseph Street**

**1936**

**NC**

**Description:** This building is utilitarian with brick laid in a running bond. It is one story with a flat roof. There are two storefronts with plate glass and metal framing dating to the 1950s/1960s. Large awnings cover the storefronts.

**#28**

**601 St. Joseph Street**

**1884/1958**

**NC**

**Description:** This building has a modern facade with brick laid in a running bond. It is one story and has a flat roof. The northern facade consists of three storefronts with recessed entries and large, plate glass display windows. This building used to be part of the three-story Flormann Block, but the upper stories were torn down in 1958 and this new facade installed.

United States Department of the Interior  
National Park Service

## National Register of Historic Places Continuation Sheet

Section Number 7 Page 15

**#29**

**607 St. Joseph Street**

**1884/c.1958**

**NC**

**Description:** This building has stucco above the storefront and stacked brick on the façade. It used to be part of the Flormann Block to the east which had its upper stories torn down in 1958. The storefront has a recessed entry with glass display windows framed in metal. The upper floors have fixed-paned windows with air conditioning units. A nameplate "WILKINS" is at the top.

**#30**

**608-610 St. Joseph Street (Lambert & Frease Building)**

**1886**

**C**

**Description:** This building is Italianate with brick laid in a running bond. It has two stories and a flat roof. There are two storefronts with an entrance to the second floor in between. The storefronts have recessed entrances with modern plate glass. An awning extends over the sidewalk. The second floor has seven bays with centered paired 1/1 windows flanked on each side by three 1/1 windows. Each window has an arched hood. The cornice is concrete with heavy ornamentation.

**#31**

**609 St. Joseph Street**

**1884, 1930s**

**C**

**Description:** This building is Art Deco and comprised of stone. It has four stories and a flat roof. The storefront is stucco with two recessed entrances and a plate glass display window. The second through fourth floors have four recessed 1/1 windows with aluminum storms and four decorative fluted pilasters and decorative dentils.

**#32**

**611 St. Joseph Street (St. Joe Antiques Mall)**

**1962**

**NC**

**Description:** This is a modern building featuring precast concrete. It has two stories and a flat roof. There are two storefronts with recessed entrances and plate glass windows. The second floor has eight precast concrete slabs devoid of any openings.

United States Department of the Interior  
National Park Service

## National Register of Historic Places Continuation Sheet

Section Number 7 Page 16

#33

**612-614 St. Joseph Street (Flormann Building)**

**1888**

**C**

**Description:** This is an Italianate building with tan brick laid in a running bond. It has two stories and a flat roof. There are two storefronts with an entrance to the second story in between. The storefronts have recessed entrances with modern plate glass. Awnings extend over the sidewalk. The second floor has seven bays with a centered 1/1 window flanked on each side by three 1/1 windows. Each window has an arched hood. The three east windows are original. The cornice is decorative with dentils.

#34

**616-618 St. Joseph Street**

**1886**

**C**

**Description:** This building is Italianate with brick laid in a running bond. It has two stories and a flat roof. There are two storefronts with glass framed by metal. Both are covered with awnings. The second floor has five bays with a centered arch window infilled with glass block. To the west are 1/1 arch windows and to the east one large tripartite window with the original arch hoods still visible. It has a decorative brick cornice.

#35

**617 St. Joseph Street (Michael's)**

**1886**

**NC**

**Description:** This building has a modern façade (date unknown) with stacked brick and ceramic steel panels. It is two stories with a flat roof. It has a recessed storefront with plate glass windows framed by aluminum. There is an entrance to the second floor on the west end.

#36

**619 St. Joseph Street (Bennett Building)**

**1918**

**C**

**Description:** This building has Commercial and Arts and Crafts influences. It uses brick in a running bond and sandstone. It has two stories and a flat roof. The two storefronts have plate glass framed by metal. The second floor has four bays with four sets of paired 1/1 windows with four-pane transoms and decorative stone lintels. It has a simple, decorative brick cornice.



United States Department of the Interior  
National Park Service

## National Register of Historic Places Continuation Sheet

Section Number 7 Page 17

**#37**

**620 St. Joseph Street (Landstrom's Jewelry)**

**1915, 1955**

**NC**

**Description:** This building is utilitarian with yellow brick in a running bond and ceramic metal on the storefront. It has two stories and a flat roof. The storefront has 1955 ceramic metal, plate glass, and a recessed entrance. There is an entrance to the second floor on the east end. There is a metal awning over the sidewalk. The second floor has two bays with large plate glass windows.

**#38**

**622 St. Joseph Street**

**1953**

**NC**

**Description:** This building is modern with brick, concrete block, and steel. It has one story and a flat roof. The storefront has plate glass framed by aluminum, a recessed entrance, wooden pilasters with a rope braid, and a large steel awning.

**#39**

**623 St. Joseph Street (Hall Building, Black Hills Beauty College)**

**1886**

**C**

**Description:** This building is Italianate with the brick laid in a running bond. It also incorporates cast iron and stone. The storefront entrances are located at the corners and recessed. Tall windows in between the entrances are divided by fluted iron pilasters with Corinthian capitals. The second floor has two bays; each bay has a larger 1/1 window flanked by smaller 1/1 windows. Centered between the bays is a raised stone panel with a lion's head. Brick dentils project below the cast iron cornice.

**#40**

**624 St. Joseph Street**

**1887, 2016**

**NC**

**Description:** This is a modern façade with brick laid in a running bond. The building is one story with a flat roof. Entrances are recessed and windows are plate glass framed by metal. (This building includes addresses for 626 and 628 St. Joseph)

United States Department of the Interior  
National Park Service

## National Register of Historic Places Continuation Sheet

Section Number 7 Page 18

**#43**

**629 St. Joseph Street (Windsor Block)**

**1886, 2010**

**C**

**Description:** This building is Italianate with brick laid in a running bond. It is two stories with a flat roof. There are four storefronts with modern recessed entries and plate glass windows framed with metal. An entrance to the second floor is located on the eastern portion of the façade. Second-floor windows are 1/1 with decorative arches. Brick pilasters divide the western portion of the second floor. The cornice is a simple, modern metal recreation. Entrepreneur Robert Florman built the Windsor Block which used brick from Marshall's Brickyard.

**#44**

**630 St. Joseph Street (Buell Building)**

**1888, 1925**

**C**

**Description:** This building is an eclectic, Victorian-era brick building. The large building has two stories and a flat roof. There is a prominent corner entrance. The west façade has four typical storefronts and arched openings at the south corner. These storefronts have recessed entries and plate glass windows. Kickplates vary from brick to wood. Three of the transoms have decorative glass; one transom is infilled with wood. An arched entrance on the southern portion of this elevation accesses the second floor. Second-floor windows on the west elevation vary from round to pedimented. Windows are 1/1; the arched openings are capped with fanlight windows. The south façade has arched openings on both levels. First floor windows are large plate glass capped by decorative glass. Second-floor windows are 1/1 and capped by arch windows; upper sashes and arch windows have decorative glass. The building's cornice is ornate and comprised of wood and metal; it has decorative pediments and finials. The most distinctive characteristic of the building is the copper Russo-Byzantine-styled dome (onion) with corner oriel window.

**#45**

**701 St. Joseph Street**

**1974**

**NC**

**Description:** This is a modern building with brick laid in a running bond. It is two stories with a flat roof. The north façade has eighteen bays with tall, narrow glass windows separated slightly by projecting brick piers. Entrances are located on the east and west ends. The west façade follows the same pattern.

United States Department of the Interior  
National Park Service

## National Register of Historic Places Continuation Sheet

Section Number 7 Page 19

**#46**  
**704 St. Joseph Street (Security Building)**  
**1928**  
**C**  
**Description:** This building is Commercial with some Art Deco ornament. It is brick laid in a common bond (6/1). It is two stories with a flat roof. The south façade has four equally-sized bays with a central entrance. The entrance has a concrete plate inscribed "Security." Each bay has modern storefronts with plate glass windows. The south façade's second floor has paired, 1/1 windows. The east façade has three storefronts with plate glass windows. The second story has 1/1 windows. On both the south and east facades, two-story brick pilasters divide the storefronts.

**#47**  
**710 St. Joseph Street**  
**1929**  
**C**  
**Description:** This is a utilitarian building with brick laid in a running bond. It has one story and a flat roof. There are two storefronts divided by a brick pilaster. Both storefronts use large plate glass windows with transoms and cloth awnings. Parapets for the two storefronts are simple.

**#48**  
**725 St. Joseph Street**  
**1918**  
**C**  
**Description:** This is a utilitarian brick building with brick laid in a running bond. It has two stories with a flat roof. The storefront has commercial recessed entrance with large plate glass windows and transoms with glass blocks. There is a decorative belt course above the transom. The second story has two bays with each containing paired 1/1 windows. There is a concrete belt course above the windows. Parapet is simple.

**#49**  
**731 St. Joseph Street (Federal Building)**  
**1912**  
**C**  
**Description:** This building is Beaux Arts and built of granite and concrete. The original portion has a rooftop balustrade; a later addition (date unknown) does not. The north elevation has five bays with one-and-a-half-story arched openings including a central entrance. The openings have modern windows with metal frames; the opening at the northwest corner has never been open. The west façade has five bays with one-and-a-half-story

United States Department of the Interior  
National Park Service

# National Register of Historic Places Continuation Sheet

Section Number 7 Page 20

arched openings. The second floors of both elevations have paired 1/1 windows above the arched openings. Paired pilasters separate the bays and dentils adorn the cornice. It originally housed a number of federal agencies including the United States Postal Service, federal court, and weather bureau.

**#50**

**801 St. Joseph Street (Art Rose Building)**

**1930**

**C**

**Description:** This is a Commercial building with brick laid in a running bond. It has two stories and a flat roof. The north elevation has two storefronts. The west storefront has a recessed entry and plate glass windows. The east storefront has plate glass windows (entry on east elevation). The north façade's second floor has five bays with fixed-pane windows, four of which are large. The east elevation has two storefronts on the south end with recessed entries and plate glass windows. Separating the south and north ends of this elevation is an entrance with Tudor arch and concrete archivolt molding. Another storefront wraps around the northeast corner. It has a recessed entrance. The second floor of the east elevation has thirteen bays with fixed-pane metal windows. There is a concrete belt course above the windows.

**#51**

**804-808 St. Joseph Street (Rapid City Business College)**

**1919**

**C**

**Description:** This building is Art Deco with yellow brick laid in a running bond. It has three stories and a flat roof. Southern façade storefronts – which extend out from the main building – are located on either side of a central, recessed entrance with plate glass windows. The west storefront has a central, recessed entrance with plate glass windows. The north storefront has a corner entrance with plate glass windows. The second and third floors on the south façade have four symmetrical bays infilled with glass blocks and paired 1/1 windows. Pilasters bookend the four bays and a nameplate reading “BUSINESS COLLEGE” is centered between the second and third floors. The east elevation has storefronts containing 2/1 wood display windows and a fixed-pane window. There are four doors on these storefronts, all flush. The second story has two bays with windows infilled with glass blocks and 1/1 windows. The cornice of the south and east elevations demonstrates simple Art Deco influences with brick designs.

United States Department of the Interior  
National Park Service

# National Register of Historic Places Continuation Sheet

Section Number 7 Page 21

**#52**  
**808 St. Joseph Street (Lakota Lodge)**  
**1951**  
**NC**  
**Description:** This is an International style building with brick laid in a running bond. It has three stories and a flat roof. The building is set back to the back corner of the adjacent buildings with a green space extending to the sidewalk. The south façade has glass blocks that wrap around the southeast corner of the elevations of the irregularly-shaped building; some of the wrap is continuous and others are around window bays. The east façade has single and paired 1/1 windows. “Lakota Lodge” and “Tourists - Commercial” are painted on top of this elevation.

**#53**  
**814-816 St. Joseph Street (Hill Apartments)**  
**1918**  
**C**  
**Description:** This building has Craftsman influences with brick laid in a running bond. Stucco is also used. It has two stories and an irregular plan. The south façade has a central concrete staircase flanked by two-story projections with gable roofs. The projections have ribbons of 4/1 windows on the second story and 12/1 on the first story. Other windows on this façade are 8/1. There are basement-level entrances at the corners with metal doors and a fixed-pane window. The east elevation has primarily single and paired 4/1 windows.

**\*NOTE:** Buildings #54-60 are part of a large agricultural/grain elevator complex

**#54**  
**412 5<sup>th</sup> Street (Aby's Feed and Seed)**  
**Building A**  
**1936**  
**C**  
**Description:** This is a shed covered with corrugated sheet metal. It is one story and has an L-shaped plan. It has a gable roof.

United States Department of the Interior  
National Park Service

## National Register of Historic Places Continuation Sheet

Section Number 7 Page 22

**#55**  
**412 5<sup>th</sup> Street (Aby's Feed and Seed)**  
**Building B**  
**1937**  
**C**  
**Description:** One-story building with brick laid in a running bond. Irregular plan with a flat roof. Entrance is off-center. Windows are modern with faux-muntins.

**#56**  
**412 5<sup>th</sup> Street (Aby's Feed and Seed)**  
**Building C**  
**1928**  
**C**  
**Description:** This is a warehouse with Colonial Revival influences. It is one story with a gable roof that extends on the south side. There are four shed-roofed dormers with six-pane, fixed-sash windows. Doors with multi-pane windows are also located on the south elevation. Walls are tile bricks.

**#57**  
**412 5<sup>th</sup> Street (Aby's Feed and Seed) (business location also uses 410 5<sup>th</sup> Street address)**  
**Building D**  
**1944**  
**C**  
**Description:** This is a utilitarian building built with concrete block. It is one story with a flat roof. The storefront has a recessed central entrance with plate glass windows. Note this building faces 5<sup>th</sup> Street and the business uses the 410 5<sup>th</sup> Street address.

**#58**  
**412 5<sup>th</sup> Street (Aby's Feed and Seed)**  
**Building E**  
**1911**  
**C**  
**Description:** This is the grain elevator. It is a wood structure covered with corrugated sheet metal. It is four stories and has an irregular plan and monitor roof.

United States Department of the Interior  
National Park Service

## National Register of Historic Places Continuation Sheet

Section Number 7 Page 23

**#59**

**412 5<sup>th</sup> Street (Aby's Feed and Seed)**

**Building F**

**1973**

**NC**

**Description:** This is warehouse built of concrete block. It is one story and has an L-shaped plan.

**#60**

**412 5<sup>th</sup> Street (Aby's Feed and Seed)**

**1939**

**C**

**Description:** This is a utilitarian building with brick laid in a running bond. It is one story. There is a central entrance. Bays on either side of the entrance have large display windows.

**#61**

**401 6<sup>th</sup> Street (Chicago and Northwestern Railroad Warehouse)**

**1932**

**C**

**Description:** This building is utilitarian with brick laid in a running bond. It has two stories and a flat roof. The east elevation has seven bays divided by brick pilasters with concrete capitals. The first floor has an entrance flanked by metal fixed-pane windows, two bays of fixed-pane windows, and four large openings that access the loading dock. The second floor of the east elevations has metal fixed-pane windows. The Chicago and Northwestern Railroad built this 84,000-square foot warehouse.

**#62**

**507 6<sup>th</sup> Street (Haines Block)**

**1918**

**C**

**Description:** This building has some Art Deco ornamentation. It is brick laid in a running bond. It has three stories and an irregular plan. There are four storefronts. The storefronts have recessed entrances and large display windows. There are fourteen bays on the second and third stories with single windows in 3/1 and 4/1 configurations. There is some decorative geometric brickwork on this elevation along with some Art Deco concrete molding. This building wraps around onto Main Street at 603 Main. This portion has a recessed, central entrance with large display windows. The second and third floors have 5/1 windows and decorative brick and stone work.

United States Department of the Interior  
National Park Service

# National Register of Historic Places Continuation Sheet

Section Number 7 Page 24

#63

**512 6<sup>th</sup> Street (Elks Building)**

**1912**

**C**

**Description:** This building has Classical and Mission influences. It has yellow brick laid in a running bond and stone. It is three stories with an irregular plan. The north façade's first floor has a central recessed entrance with decorative glass in the arch. Large windows with large transoms flank the entrance. The second and third stories have paired 1/1 and Chicago-style windows. The central bay's second and third floors have metal balconies. The west elevation's first floor has a central arched entrance with entrance doors for all floors. The arch has decorative glass. There are three bays to the north of this central entrance. Those bays consist of a smaller arch entrance flanked by large windows and large transoms (this layout mimics the north elevation's first floor). There are also three bays to the south of this central entrance. These bays have a modern configuration with plate glass framed by metal. Wood covers the upper portion of the storefront and curved awnings protrude. The second and third stories of the west elevation have seven bays. These bays contain primarily 1/1 and Chicago-style windows. The second and third floors, above the central entrance, have metal balconies. Brown brick pilasters separates the bays on the north and west elevations. The cornice has brackets and dentils, along with a prominent Mission-shaped parapet. J.P. Eisentraut designed this building which originally held an elaborate opera house.

#64

**516-518 6<sup>th</sup> Street**

**1889**

**C**

**Description:** This building is Italianate with brick laid in a running bond. It is two stories with a flat roof. Both storefronts have a recessed entry with display windows framed in wood and transoms. The second story has six bays divided by pilasters. Each bay has one 1/1 arched window.

#66

**522-530 6<sup>th</sup> Street (Duhamel Building)**

**1908**

**C**

**Description:** The building is a Chicago style building with brick laid in a running bond. It is two stories and has an irregular plan. Storefronts on both the south and west elevations have recessed entrances with display windows framed in wood. Above the storefronts are rows of transom windows separated by pilasters. A cloth awning extends over the sidewalk. Second-floor windows are fixed pane. The most common window pattern is four solid infill panels of over fixed-pane windows. The building has a steel frame.



United States Department of the Interior  
National Park Service

## National Register of Historic Places Continuation Sheet

Section Number 7 Page 25

#67

**523 6<sup>th</sup> Street (Alex Johnson Hotel)**

**1928**

**C**

**Description:** The building is Tudor Revival with brick laid in a running bond. It has nine stories and an irregular plan. The main entrance is on the east elevation with a metal awning. There is also an entrance at the southeast corner. First floor has primarily long, narrow windows with some plate glass. Windows are modern replacement one- and two-pane configurations. The building has half-timbered, gabled dormers at the top. The building has terra-cotta quoining and detailing. Above the street-level storefronts are terra-cotta Indian-head medallions. Edward Oldefest designed this building which was named after Chicago and Northwestern Railroad vice-president Alex Johnson. Charles de Lopez was the interior designer.

#68

**616 6<sup>th</sup> Street (City Hall)**

**1903**

**C**

**Description:** This building is Colonial Revival with brick laid in a running bond. It is one story with a hipped roof. There is a central entrance with wood door and sidelights; at the entrance is a portico. Flanking the entrance are fixed-pane windows.

#69

**517-519 7<sup>th</sup> Street (Swander Grocery)**

**1907**

**C**

**Description:** This building is Romanesque with rusticated concrete block. It has two stories and a flat roof. The north storefront has a recessed entry, large display windows framed with wood, and transom windows. The southern portion of the first floor has four arched bays that contain two, wood double doors and two 1/1 windows. The arches have fanlight windows. The second floor has eight bays with 1/1 windows capped with arch fanlight windows.

#70

**523 7<sup>th</sup> Street**

**1908**

**NC**

**Description:** This is a small building of stacked brick. It has a recessed second story. First floor has a door and display window. Second floor has a two-part window.

United States Department of the Interior  
National Park Service

# National Register of Historic Places Continuation Sheet

Section Number 7 Page 26

**#71**  
**518 Main Street (Main Street Square)**

**2012**

**NC**

**Description:** This site features a small area for a stage, ice rink/open space, and several statues and landscaping features.

DRAFT

United States Department of the Interior  
National Park Service

# National Register of Historic Places Continuation Sheet

Section Number 7 Page 27

## 10. Geographical Data

### Verbal Boundary Description (Describe the boundaries of the property.)

The 2018 boundary **remains the same as established in the 1998 amendment.** It is provided below for reference.

### BOUNDARY DESCRIPTION

The Rapid City Historic Commercial District Contains all properties within the following boundaries. Starting at the Northwest corner of Lot 26 of Block 82 going east extends to the Northeast corner of Lot 28 of block 82 then goes South 75 feet then crosses Lot 29 of Block 82 going East to the lots western boundary the turns South extending to the Southeast corner of Lot 29 of Block 82. The boundary then crosses Mount Rushmore Road going East along the north side of Saint Joseph Street to the southwest corner of Lot 27 of Block 82. The boundary then turns North to the northwest corner of Lot 27 of Block 83, then turn East to the Northeast corner of Lot 27 of Block 83 then turns north across the alley to the northwest corner of Lot 5 of Block 83. The boundary the turns East and goes across Seventh Street to the northwest corner of lot 16 of Block 84. The line then turns North to the Northwest corner of Lot 17 of Block 74 then turns East to the Northwest corner of Lot 23 of Block 74 the turns North across the alley to the Northwest corner of Lot 9 of Block 74 then turns East to the Northeast corner of Lot 1 of Block 74, then turns South across the alley to the Northeast corner of Lot 32 of Block 74. The line then turns East across Sixth street along the southside of the alley of Block 75 then across Fifth Street to the Northwest corner of Lot 17 of Block 76. The line then turns north across the alley of Block 76 to the Northwest corner of Lot 16 of Block 76. The line then turns East to the Northeast corner of Lot 6 of Block 76 the turns south to the Southeast corner of Lot 6 of Block 76 then turns West to the Southeast corner of Lot 10 of Block 76 then turns South across the alley to the Southeast corner of Lot 23 of Block 76. The line then turns West and goes across Fifth Street to a point 14.4 inches east of the Southeast corner of Lot 25 of block 75 then turns south and crosses Main Street, across the alley of Block 85 to a point 14.4 inches east of the Northeast corner of Lot 25 of Block 85, then turns west to the Northeast corner of Lot 28 of Block 85 then turns South to the Southeast corner of Lot 28 of Block 85. The line then turns West to a point 9 feet East of the Southeast corner of Lot 21 of Block 85. The line then turns South across Saint Joseph Street across the alley of Block 95 to a point 9 feet east and 45 feet south of the Northwest corner of lot 21 of Block 95. The line then turn West across Sixth Street to a point 45 feet south of the Northeast corner of Lot 32 of Block 94. The line then turns North to the Southeast corner of Lot 1 of Block 94. The line then turns West across Seventh Street, then across Mount Rushmore Road to the Southwest corner of Lot 4 of Block 92. The line then turns North to the Southwest corner of Lot 29 of Block 82 then turns West to the Southwest Corner of Lot 26 of Block 82 the turns North to the starting point, the Northwest corner of Lot 26 of Block 82.

United States Department of the Interior  
National Park Service

# National Register of Historic Places Continuation Sheet

Section Number 7 Page 28

**Boundary Justification** (Explain why the boundaries were selected.)  
The boundary remains the same as established in the 1998 amendment.

---

## 11. Form Prepared By

name/title: C.B. Nelson  
organization: SD SHPO  
street & number: 900 Governors Drive  
city or town: Pierre state: SD zip code: 57501  
e-mail chrisb.nelson@state.sd.us  
telephone: 605-773-3458  
date: 02/27/2018

United States Department of the Interior  
National Park Service

# National Register of Historic Places Continuation Sheet

Section Number 7 Page 29

## Additional Documentation

Submit the following items with the completed form:

- **Maps:** A **USGS map** or equivalent (7.5 or 15 minute series) indicating the property's location.
- **Sketch map** for historic districts and properties having large acreage or numerous resources. Key all photographs to this map.
- **Additional items:** (Check with the SHPO, TPO, or FPO for any additional items.)

## Photographs

Submit clear and descriptive photographs. The size of each image must be 1600x1200 pixels (minimum), 3000x2000 preferred, at 300 ppi (pixels per inch) or larger. Key all photographs to the sketch map. Each photograph must be numbered and that number must correspond to the photograph number on the photo log. For simplicity, the name of the photographer, photo date, etc. may be listed once on the photograph log and doesn't need to be labeled on every photograph.

## Photo Log

Name of Property: Rapid City Historic Commercial District 2018 Amendment

City or Vicinity: Rapid City

County: Pennington

State: SD

Photographer: Kate Nelson

Date Photographed: 15 January 2018

Description of Photograph(s) and number, include description of view indicating direction of camera:

1 of 45:

United States Department of the Interior  
National Park Service

## National Register of Historic Places Continuation Sheet

Section Number 7 Page 30

**SD\_PenningtonCounty\_RapidCityHistoricCommercialDistrict2018Amendment\_0001**

Looking East at the Aby complex and the east side of the 400 block of Fifth Street. Photo was taken from the middle of Fifth Street.

**SD\_PenningtonCounty\_RapidCityHistoricCommercialDistrict2018Amendment\_0002**

Looking North at the elevator at the Aby Complex. Photo taken inside the Aby Complex.

**SD\_PenningtonCounty\_RapidCityHistoricCommercialDistrict2018Amendment\_0003**

Looking Northeast at the buildings in the Aby Complex. Photo taken within the Aby Complex from the south side of the elevator.

**SD\_PenningtonCounty\_RapidCityHistoricCommercialDistrict2018Amendment\_0004**

Looking North at the north side of the 500 block of Main Street. Photo taken from the sidewalk.

**SD\_PenningtonCounty\_RapidCityHistoricCommercialDistrict2018Amendment\_0005**

Looking Northwest at the north side of the 600 block of Main Street and the west side of the 400 block of Sixth Street. Photo taken from the southeast corner of the intersection of Main and Sixth Streets.

**SD\_PenningtonCounty\_RapidCityHistoricCommercialDistrict2018Amendment\_0006**

Looking north at the north side of the 600 block of Main Street, midblock. Photo taken from the middle of the middle of Main Street.

**SD\_PenningtonCounty\_RapidCityHistoricCommercialDistrict2018Amendment\_0007**

Looking north at the north side of the 600 block of Main Street, midblock. Photo taken from the middle of the middle of Main Street.

**SD\_PenningtonCounty\_RapidCityHistoricCommercialDistrict2018Amendment\_0008**

Looking South at the south side of the 600 block of Main Street. Photo taken from the middle of Main Street.

**SD\_PenningtonCounty\_RapidCityHistoricCommercialDistrict2018Amendment\_0009**

Looking South at the south side of the 600 block of Main Street. Photo taken from near the intersection of Main and Sixth Streets at the northwest corner.

**SD\_PenningtonCounty\_RapidCityHistoricCommercialDistrict2018Amendment\_0010**

United States Department of the Interior  
National Park Service

## National Register of Historic Places Continuation Sheet

Section Number 7 Page 31

Looking Southeast at the south side of the 600 block of Main Street. Photo taken from the middle of Main Street.

**SD\_PenningtonCounty\_RapidCityHistoricCommercialDistrict2018Amendment\_0011**

Looking South at the south side of the 600 block of Main Street. Photo taken from near the intersection of Main and Sixth Streets at the northwest corner.

**SD\_PenningtonCounty\_RapidCityHistoricCommercialDistrict2018Amendment\_0012**

Looking Southeast at the Elks building at the southeast corner of the intersection of Main and Sixth Street. Photo taken from the northwest corner of the intersection of Main and Sixth Streets.

**SD\_PenningtonCounty\_RapidCityHistoricCommercialDistrict2018Amendment\_0013**

Looking Northwest at the north side of the 500 block of St. Joseph Street. Photo taken from near the intersection of St. Joseph and Fifth Streets.

**SD\_PenningtonCounty\_RapidCityHistoricCommercialDistrict2018Amendment\_0014**

Looking Northwest at the north side of the 500 block of St. Joseph Street (Duhammel building in foreground). Photo take form the middle of the St. Joseph Street.

**SD\_PenningtonCounty\_RapidCityHistoricCommercialDistrict2018Amendment\_0015**

Looking Northwest at intersection of St. Joseph and Sixth Streets (Alex Johnson Hotel). Photo take from near the intersection of St. Joseph and Sixth Streets.

**SD\_PenningtonCounty\_RapidCityHistoricCommercialDistrict2018Amendment\_0016**

Looking Northwest and the north side of the 600 block of St. Joseph Street. Photo taken from the middle of St. Joseph Street.

**SD\_PenningtonCounty\_RapidCityHistoricCommercialDistrict2018Amendment\_0017**

Looking Northeast at the northeast corner of the intersection of St. Joseph Street and Seventh Street (Buehl Building). Photo take form the southeast corner of the intersection of St. Joseph Street and Seventh Street.

**SD\_PenningtonCounty\_RapidCityHistoricCommercialDistrict2018Amendment\_0018**

Looking Northwest at the northwest intersection of St. Joseph and Seventh Streets. Photo taken form the southeast corner of the intersection of St. Joseph and Seventh Street.

United States Department of the Interior  
National Park Service

## National Register of Historic Places Continuation Sheet

Section Number 7 Page 32

### **SD\_PenningtonCounty\_RapidCityHistoricCommercialDistrict2018Amendment\_0019**

Looking Northwest at the northwest corner of the intersection of St. Joseph and Mount Rushmore Road. Photo taken from the southeast intersection of St. Joseph and Mount Rushmore Road.

### **SD\_PenningtonCounty\_RapidCityHistoricCommercialDistrict2018Amendment\_0020**

Looking North at the 800 block of St. Joseph Street. Photo taken from the middle of St. Joseph Street.

### **SD\_PenningtonCounty\_RapidCityHistoricCommercialDistrict2018Amendment\_0021**

Looking South at the southwest corner of the intersection of St. Joseph Street and Mount Rushmore Road. Photo take from the northwest corner of the intersection of St. Joseph and Mount Rushmore Road.

### **SD\_PenningtonCounty\_RapidCityHistoricCommercialDistrict2018Amendment\_0022**

Looking Southwest at the southeast corner of the intersection of St. Joseph Street and Seventh Street (Windsor Block). Photo taken from the middle of Saint Joseph Street.

### **SD\_PenningtonCounty\_RapidCityHistoricCommercialDistrict2018Amendment\_0023**

Looking Southwest at the south side of the 600 block of St. Joseph Street. Photo taken from the middle of St. Joseph Street.

### **SD\_PenningtonCounty\_RapidCityHistoricCommercialDistrict2018Amendment\_0024**

Looking Southeast at the south side of the 600 block of St. Joseph Street. Photo taken from the middle of St. Joseph Street.

### **SD\_PenningtonCounty\_RapidCityHistoricCommercialDistrict2018Amendment\_0025**

Looking East at the northwest corner of the intersection of St. Joseph and Sixth Streets (Duhammel Building). Photo taken from the middle of Sixth Street.

### **SD\_PenningtonCounty\_RapidCityHistoricCommercialDistrict2018Amendment\_0026**

Looking East at the east side of the 500 block of Sixth Street. Photo taken from the middle of Sixth Street.

### **SD\_PenningtonCounty\_RapidCityHistoricCommercialDistrict2018Amendment\_0027**

Looking Northeast at the southeast corner of the intersection of Main and Sixth Streets (Elks Building). Photo taken from the middle of Sixth Streets.



United States Department of the Interior  
National Park Service

## National Register of Historic Places Continuation Sheet

Section Number 7 Page 33

### **SD\_PenningtonCounty\_RapidCityHistoricCommercialDistrict2018Amendment\_0028**

Looking West/North west at the northwest corner of the intersection of Main and Sixth Street (Prairie Edge). Photo taken from the northeast corner of the intersection of Main and Sixth Streets.

### **SD\_PenningtonCounty\_RapidCityHistoricCommercialDistrict2018Amendment\_0029**

Looking Southwest at the southwest corner of the intersection of Main and Sixth Streets. Photo taken from the northeast corner of the intersection of Main and Sixth Streets.

### **SD\_PenningtonCounty\_RapidCityHistoricCommercialDistrict2018Amendment\_0030**

Looking East at 616 Sixth Street (Old City Hall). Photo taken from the middle of Sixth Street.

### **SD\_PenningtonCounty\_RapidCityHistoricCommercialDistrict2018Amendment\_0031**

Looking Northwest at the north side of the 700 block of St. Joseph Street. Photo taken from the middle of St. Joseph Street.

### **SD\_PenningtonCounty\_RapidCityHistoricCommercialDistrict2018Amendment\_0032**

Looking South at the southeast corner of the intersection of St. Joseph Street and Mt. Rushmore Road. Photo taken from the northeast corner of the intersection of St. Joseph Street and Mt. Rushmore Road.

### **SD\_PenningtonCounty\_RapidCityHistoricCommercialDistrict2018Amendment\_0033**

Looking South/Southwest at the southeast corner of the intersection of Seventh and St. Joseph Street. Photo taken from near the northwest corner of the intersection of Seventh and St. Joseph Streets.

### **SD\_PenningtonCounty\_RapidCityHistoricCommercialDistrict2018Amendment\_0034**

Looking Southeast at the south side of the 500 block of Main Street. Photo taken from near the northeast corner of the intersection of Main and Sixth Streets.

### **SD\_PenningtonCounty\_RapidCityHistoricCommercialDistrict2018Amendment\_0035**

Looking East at the northeast corner of the intersection of Main and Fifth Streets. Photo taken from the northwest corner of the intersection of Main and Fifth Streets.

### **SD\_PenningtonCounty\_RapidCityHistoricCommercialDistrict2018Amendment\_0036**

Looking North at the north side of the 500 block of Main Street. Photo taken from the middle of Main Street.

United States Department of the Interior  
National Park Service

## National Register of Historic Places Continuation Sheet

Section Number 7 Page 34

### **SD\_PenningtonCounty\_RapidCityHistoricCommercialDistrict2018Amendment\_0037**

Looking North at the north side of the 500 block of Main Street. Photo taken from the middle of Main Street near the intersection of Main and Sixth Streets.

### **SD\_PenningtonCounty\_RapidCityHistoricCommercialDistrict2018Amendment\_0038**

Looking Northwest at the west side of the 400 block of Sixth Street. Photo taken from the middle of Sixth Street.

### **SD\_PenningtonCounty\_RapidCityHistoricCommercialDistrict2018Amendment\_0039**

Looking Northwest at the northwest intersection of St. Joseph and Seventh Streets. Photo taken from the southwest corner of the intersection of St. Joseph and Seventh Streets.

### **SD\_PenningtonCounty\_RapidCityHistoricCommercialDistrict2018Amendment\_0040**

Looking Northwest at the north side of the of the 600 block of St. Joseph Street. Photo taken from the middle of St. Joseph Street.

### **SD\_PenningtonCounty\_RapidCityHistoricCommercialDistrict2018Amendment\_0041**

Looking Northwest at the north side of the of the 600 block of St. Joseph Street. Photo taken from the middle of St. Joseph Street.

### **SD\_PenningtonCounty\_RapidCityHistoricCommercialDistrict2018Amendment\_0042**

Looking Southwest at the southwest intersection of the St. Joseph and Sixth Streets. Photo taken from the northwest corner of the intersection of St. Joseph and Sixth Streets.

### **SD\_PenningtonCounty\_RapidCityHistoricCommercialDistrict2018Amendment\_0043**

Looking West at the west side of the 500 block of Sixth Street. Photo taken from the middle of Sixth Street.

### **SD\_PenningtonCounty\_RapidCityHistoricCommercialDistrict2018Amendment\_0044**

Looking West at the west side of the 500 block of Sixth Street. Photo taken from the middle of Sixth Street.

### **SD\_PenningtonCounty\_RapidCityHistoricCommercialDistrict2018Amendment\_0045**

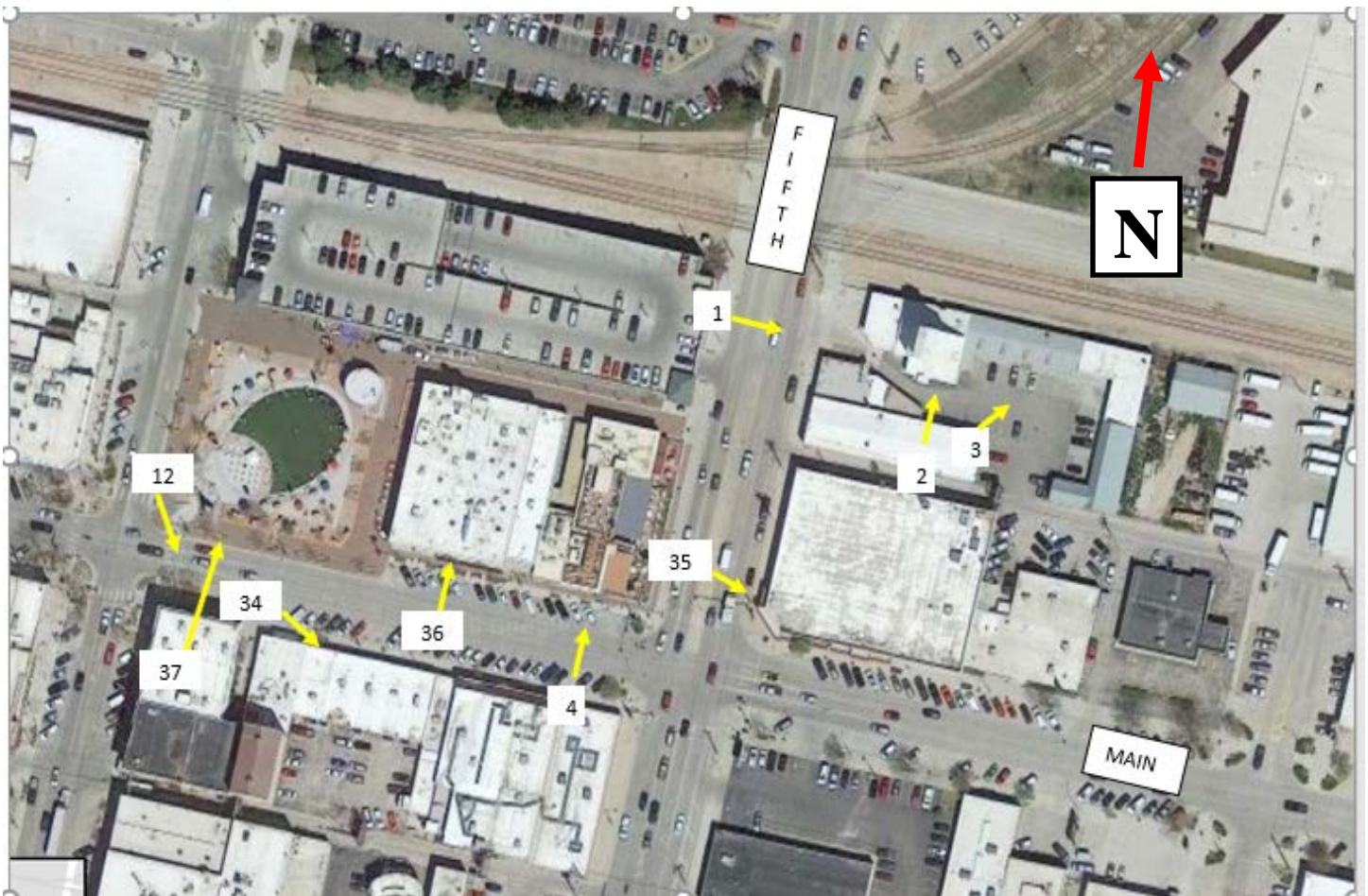
Looking northwest at the west side of the 500 block of Seventh Street. Photo taken from the middle of Seventh Street.

United States Department of the Interior  
National Park Service

# National Register of Historic Places Continuation Sheet

Section Number 7 Page 35

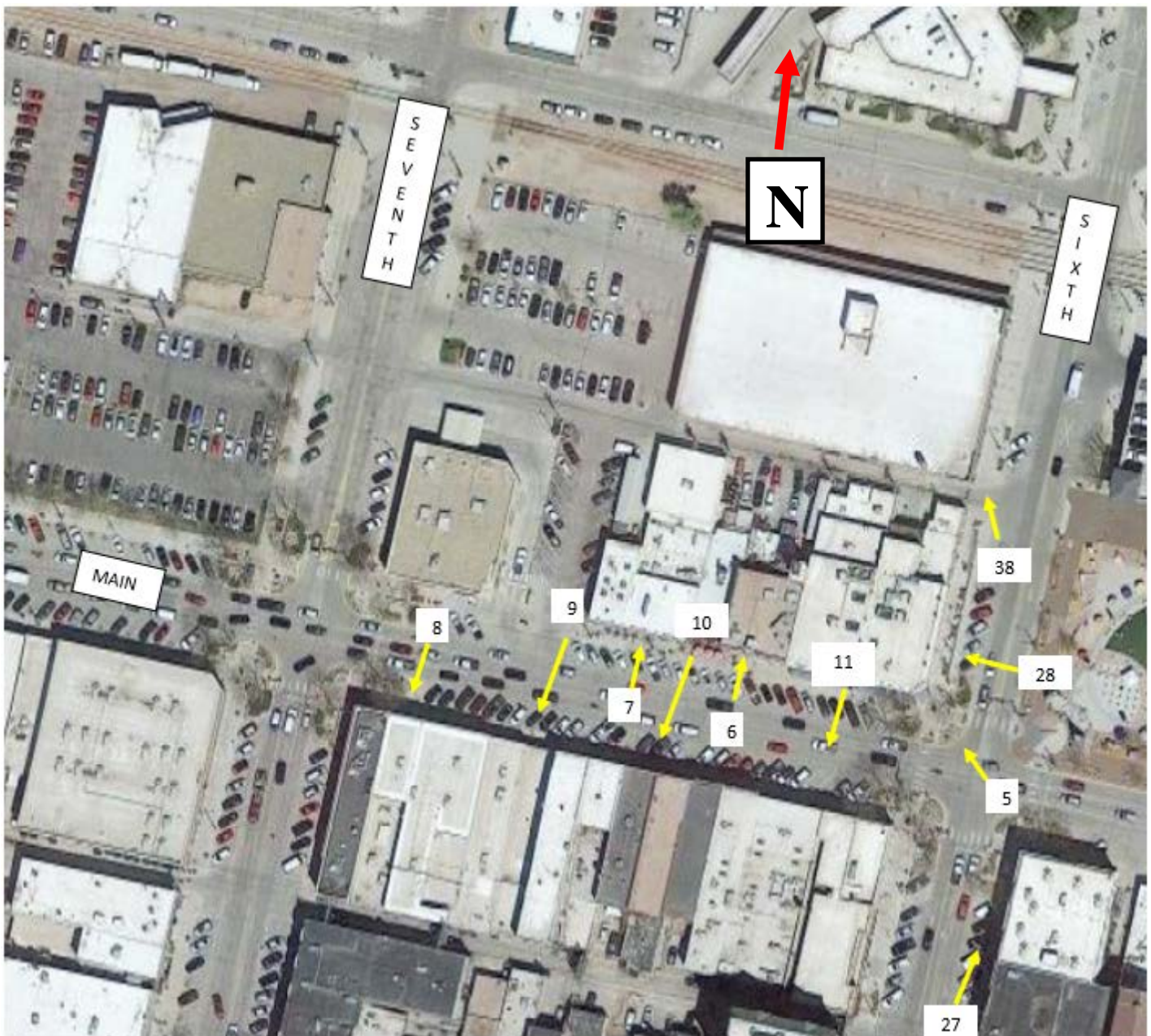
## PHOTO MAP KEY (FOUR IMAGES TOTAL)



United States Department of the Interior  
National Park Service

# National Register of Historic Places Continuation Sheet

Section Number 7 Page 36



United States Department of the Interior  
National Park Service

# National Register of Historic Places Continuation Sheet

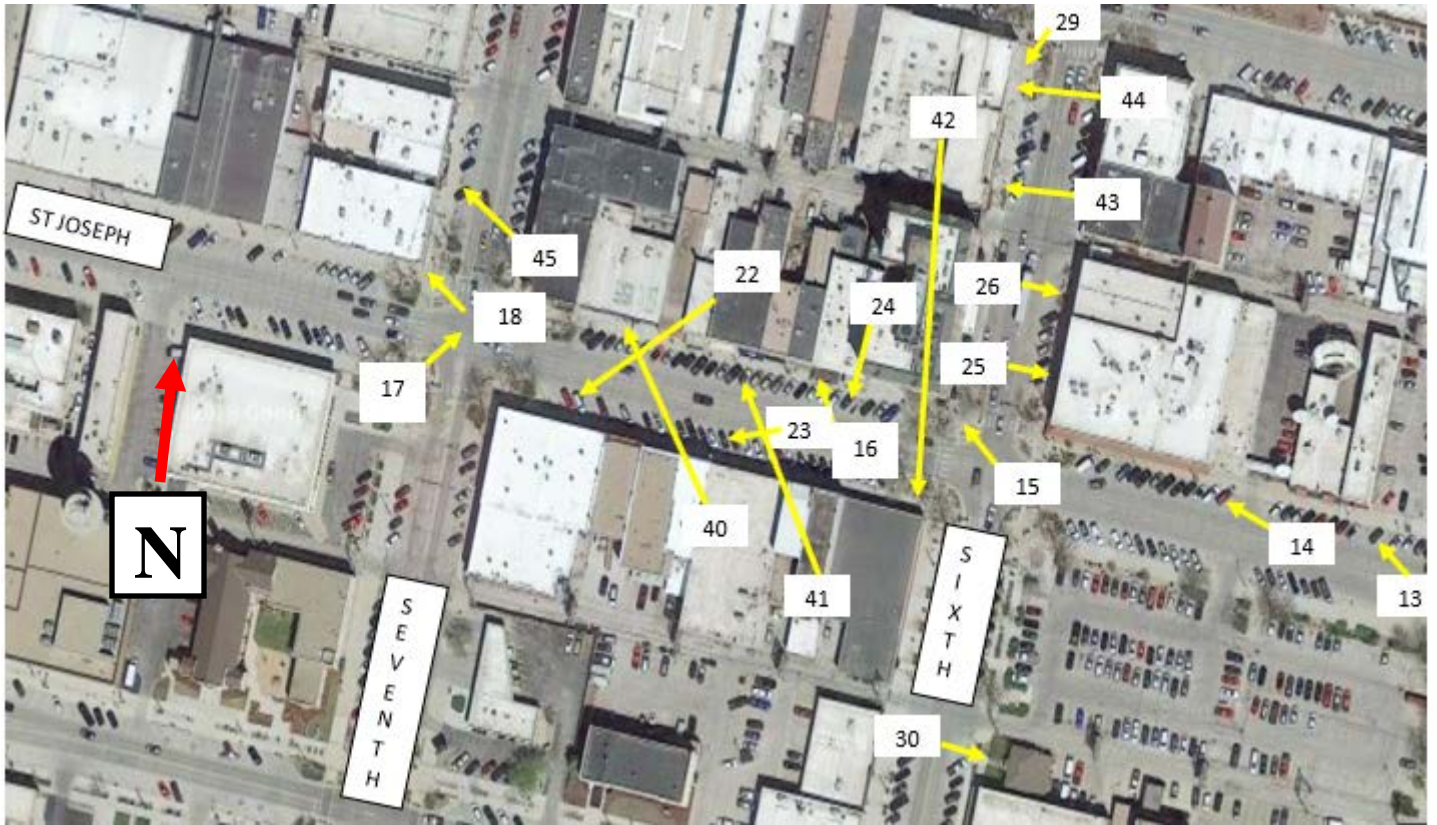
Section Number 7 Page 37



United States Department of the Interior  
National Park Service

# National Register of Historic Places Continuation Sheet

Section Number 7 Page 38



United States Department of the Interior  
National Park Service

# National Register of Historic Places Continuation Sheet

Section Number 7 Page 39

---

**Contributing and NC MAP here and we are good to go.**

DRAFT